

Alessandro Ventrella©

NCD-AVT

Linee e colori definiti contraddistinguono lo stile di illustrazioni uniche e immediate ispirate dal mondo della musica e delle favole con un forte accento moderno. /

Defined lines and colours stand out in the style of unique and immediate illustrations inspired by the world of music and fairy tales with a strong modern accent.



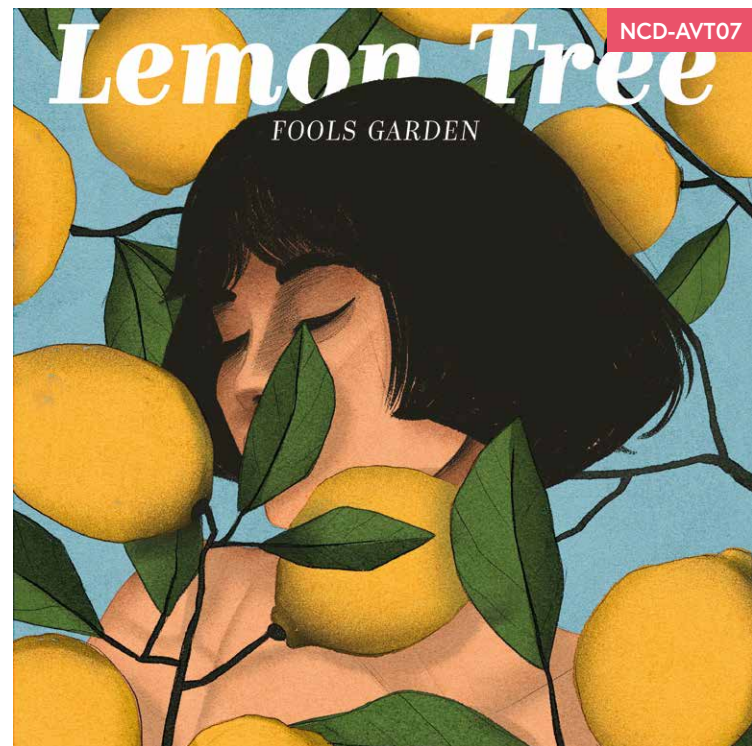
#Alessandro Ventrella



#Alessandro Ventrella



#Alessandro Ventrella



#Alessandro Ventrella



#Alessandro Ventrella



#Alessandro Ventrella



#Alessandro Ventrella



NCD-AVT10

#Alessandro Ventrella



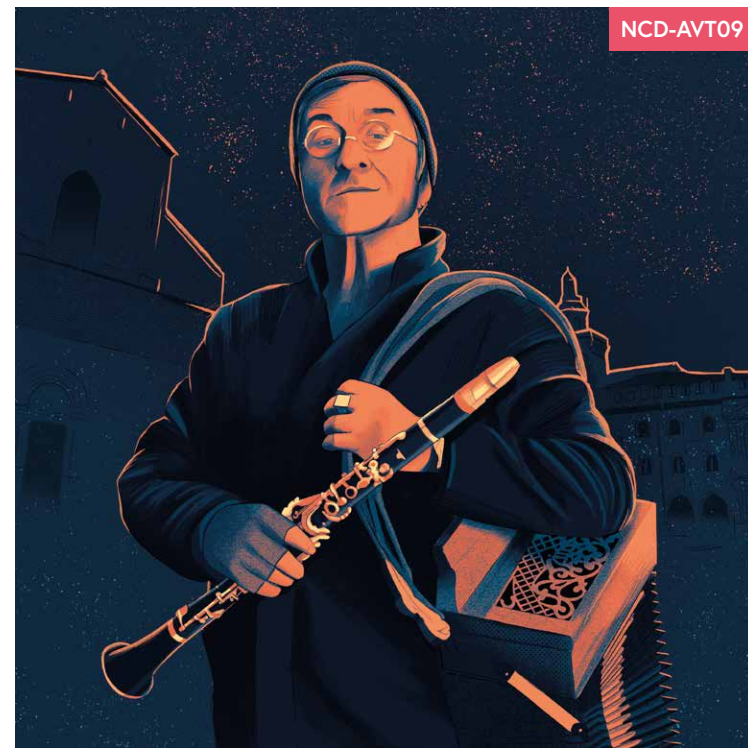
NCD-AVT02

#Alessandro Ventrella



NCD-AVT12

#Alessandro Ventrella



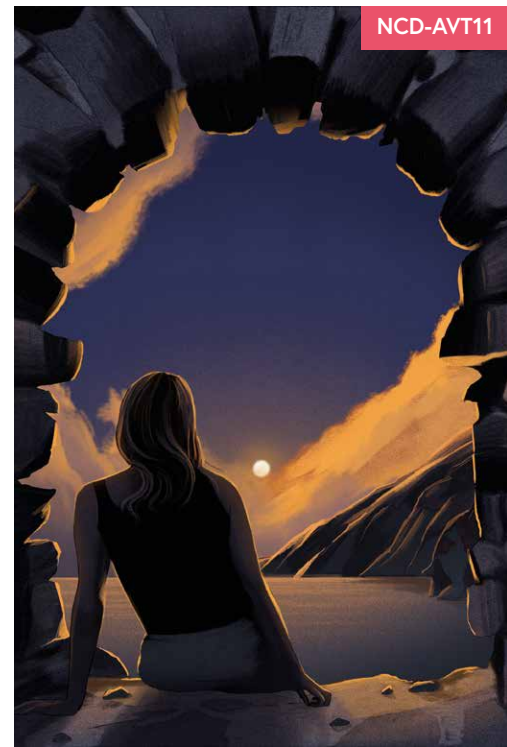
NCD-AVT09

#Alessandro Ventrella



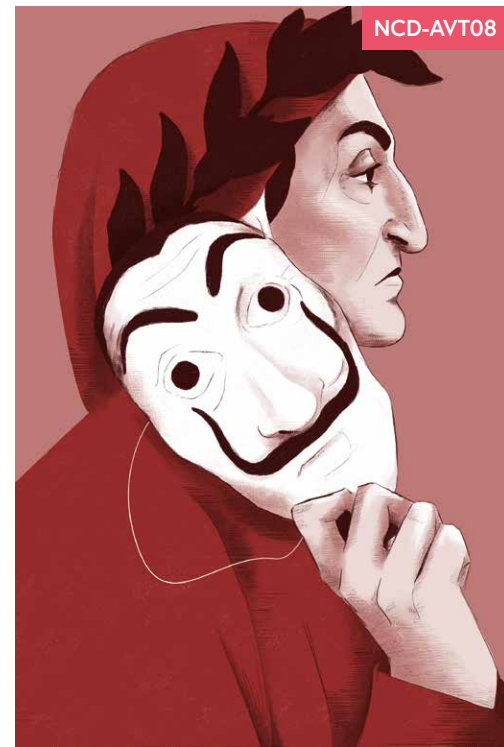
NCD-AVT05

#Alessandro Ventrella



NCD-AVT11

#Alessandro Ventrella



NCD-AVT08

#Alessandro Ventrella



NCD-AVT03

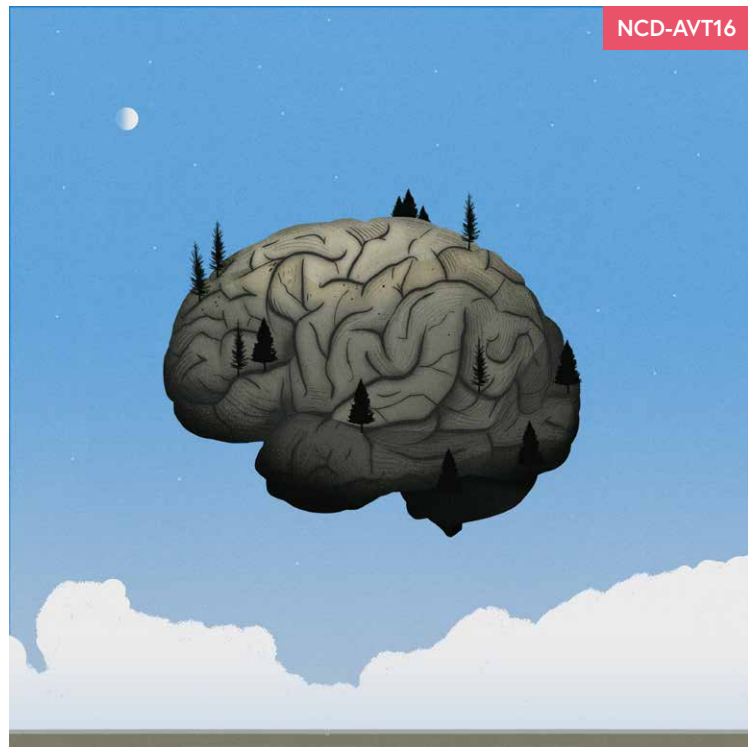
#Alessandro Ventrella

NCD-ACG

Alberto Casagrande©

Illustrazioni surreali che descrivono l'ordinario: le grafiche giocano con la prospettiva, i toni saturi, la tipografia espressiva e rappresentano ciò che accade all'interno dello spazio negativo. /

Surreal illustrations describe the ordinary: graphics play with perspective, saturated tones, and expressive typography and represent what happens within the negative space.



#Alessandro Ventrella

NCD-AVT16



#Alberto Casagrande

NCD-ACG05



#Alberto Casagrande

NCD-ACG01



#Alberto Casagrande

NCD-ACG03



#Alberto Casagrande

NCD-ACG04



#Alberto Casagrande

NCD-ACG02



#Alberto Casagrande

NCD-ACG06

Lia Bosch©

NCD-LBH

Esplorare la tradizione, sviluppando una creatività insofferente alle etichette, e nello stesso tempo alimentata da attraenti intrecci pop di moda e design. /

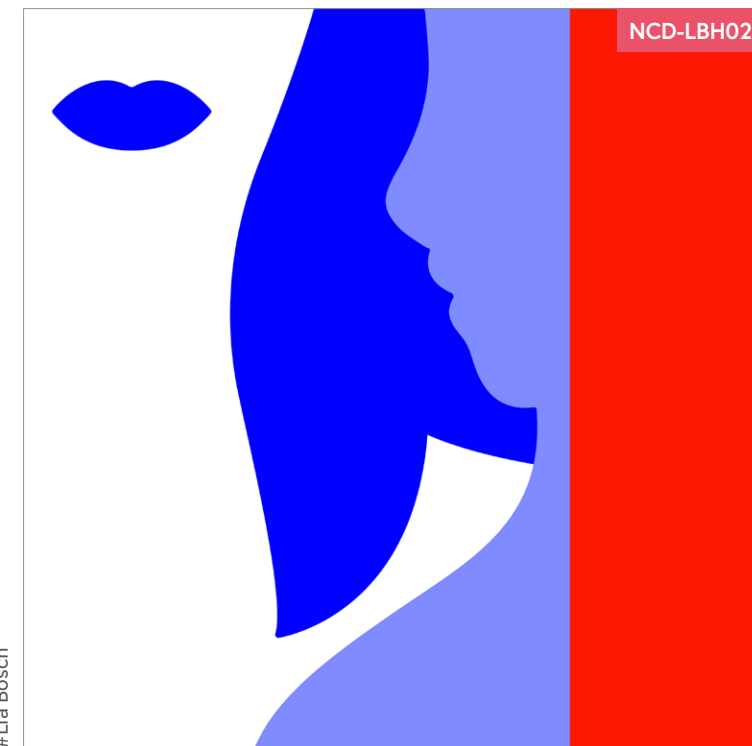
Explore the tradition, developing creativity intolerant to labels, and at the same time be fed by attractive pop weaves from fashion and design.



#Lia Bosch



#Lia Bosch



#Lia Bosch

Silvia Pertile©

NCD-SPR

L'illustrazione è, in questa serie di opere, il punto di incontro tra disegno e parola scritta. Fini dettagli giocano con colori scuri e spazio bianco costruendo opere emozionanti. /

The illustration is, in this series of works, the meeting point between drawing and the written word. Fine details play with dark colours and white space building exciting works.



#Silvia Pertile



#Silvia Pertile

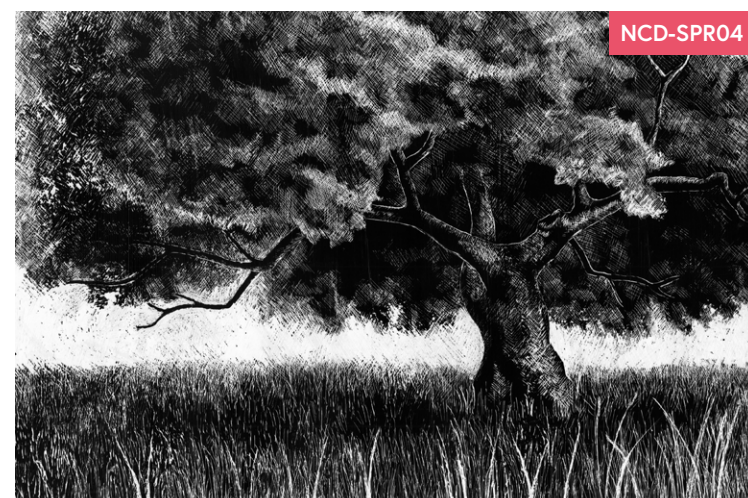


#Silvia Pertile



NCD-SPR06

#Silvia Pertile



NCD-SPR04

#Silvia Pertile



NCD-IBC02

#Isabella Conti



NCD-IBC08

#Isabella Conti



NCD-SPR01

#Silvia Pertile

Isabella Conti©

NCD-IBC

Disegni come finestre aperte su un mondo interiore, leggero e paziente, contemplativo e mai artefatto: un racconto per immagini legate all'esistenza, ai ricordi e alle emozioni. /

Drawings like open windows on an inner world, light and patient, contemplative and never affected: a story in images related to existence, memories, and emotions.



NCD-IBC07

#Isabella Conti



NCD-IBC04

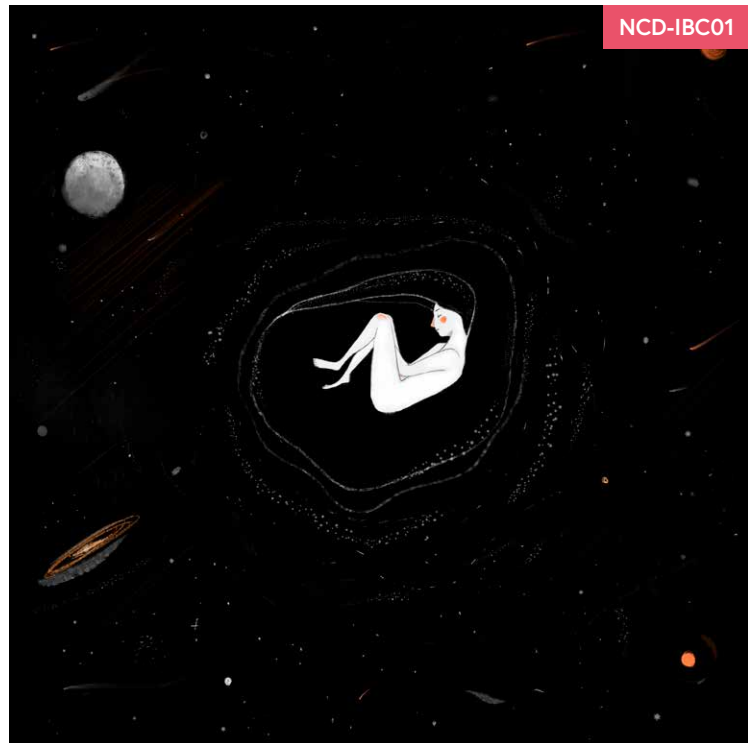
#Isabella Conti



#Isabella Conti



#Isabella Conti



#Isabella Conti



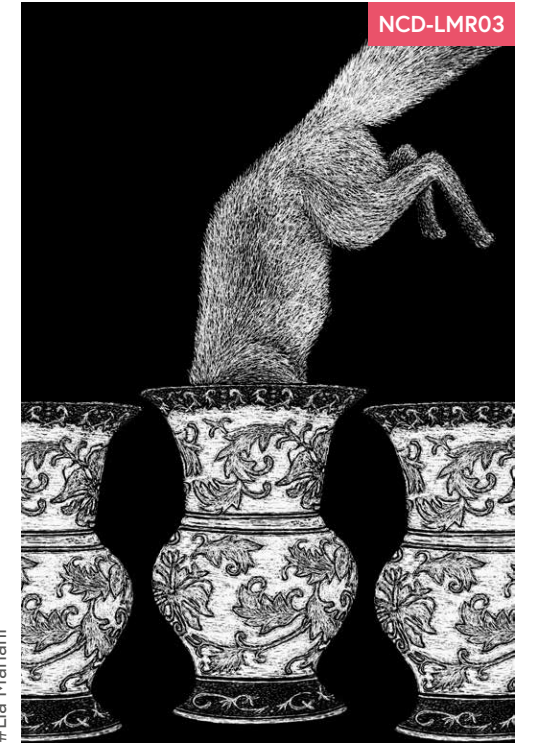
#Isabella Conti

Lia Mariani©

NCD-LMR

Il disegno diventa scultura, rigorosamente in bianco e nero, in una serie dedicata alla natura e ai suoi abitanti. L'arte è minuziosa e ironica, dal buio più profondo la luce esce con forza. /

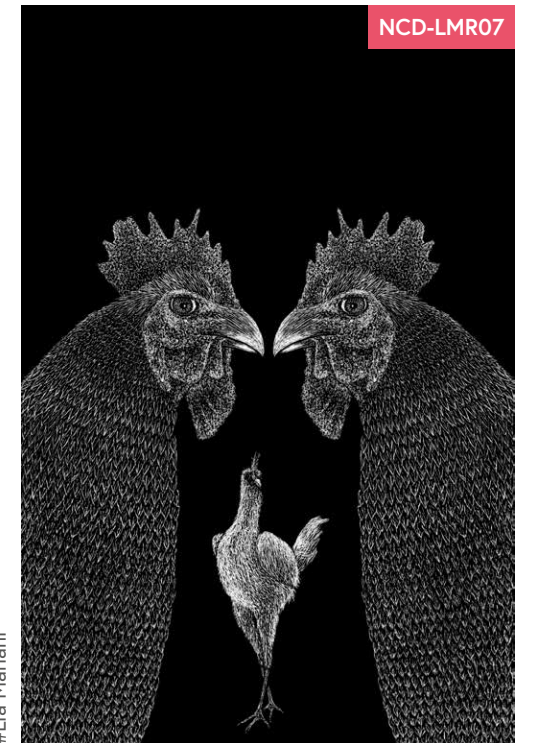
The drawing becomes sculpture, in a series dedicated to nature and its inhabitants. Art is meticulous and ironic, from the deepest darkness the light comes out strongly.



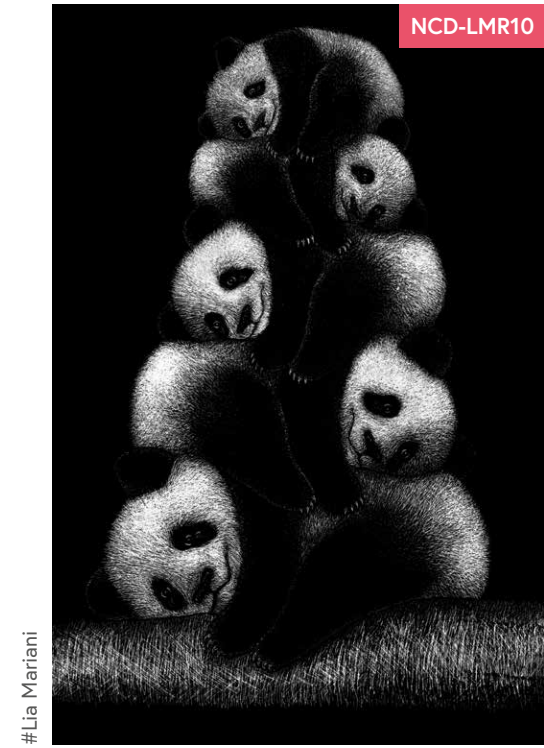
#Lia Mariani



#Lia Mariani



#Lia Mariani



NCD-LMR10

#Lia Mariani



NCD-LMR01

#Lia Mariani



NCD-LMR02

#Lia Mariani



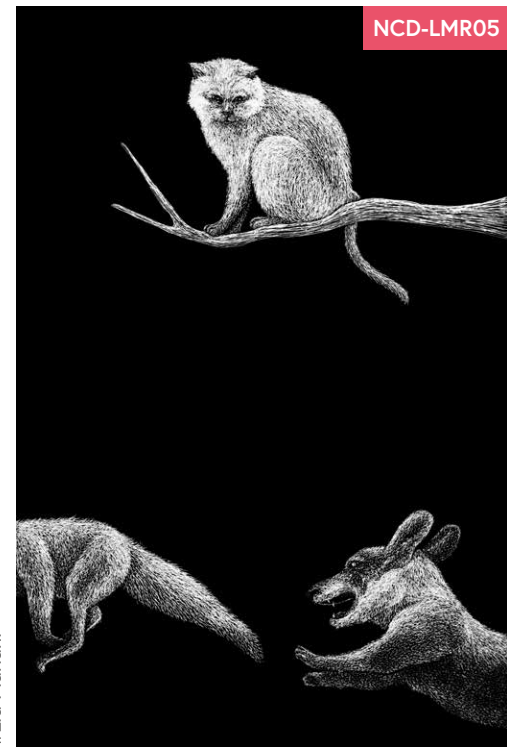
NCD-LMR06

#Lia Mariani



NCD-LMR04

#Lia Mariani



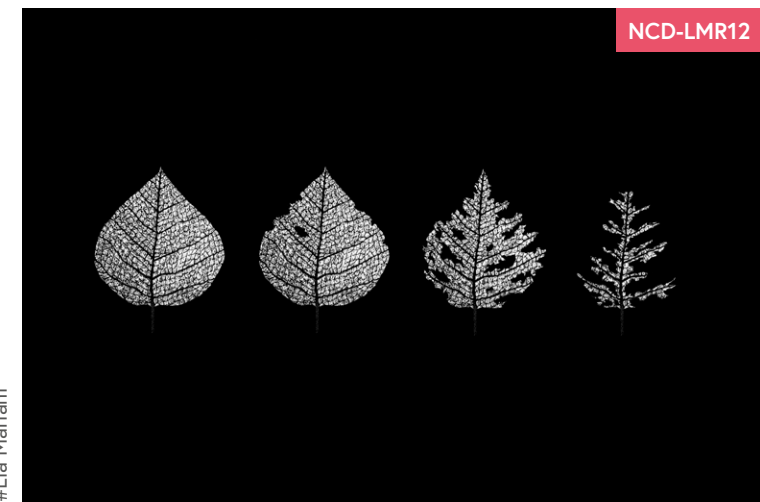
NCD-LMR05

#Lia Mariani



NCD-LMR09

#Lia Mariani



NCD-LMR12

#Lia Mariani

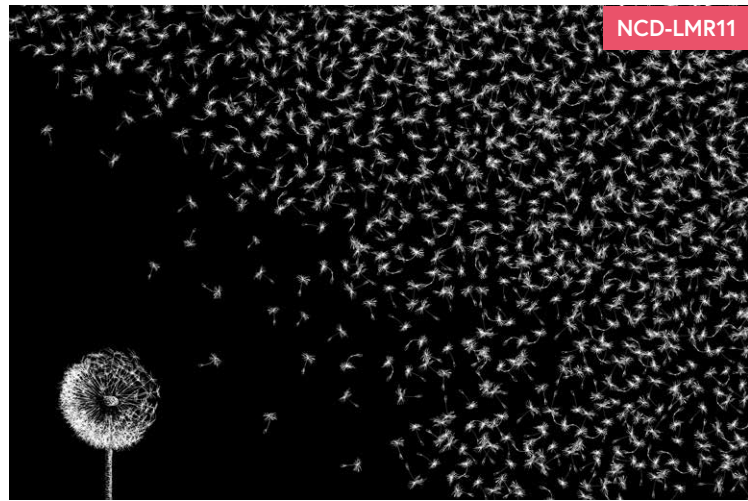
NCD-IGP

Igea Paiano©

Linee mai banali, colori che rispecchiano i sentimenti, emozioni essenziali e astratte: la fantasia è la protagonista di illustrazioni accattivanti. /

Never common lines, colours that reflect feelings, essential and abstract emotions: fantasy is the protagonist of winsome illustrations.

#Lia Mariani



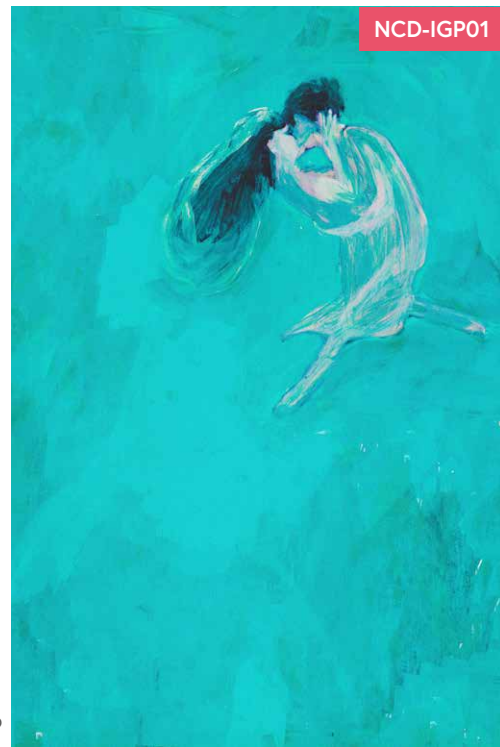
#Igea Paiano



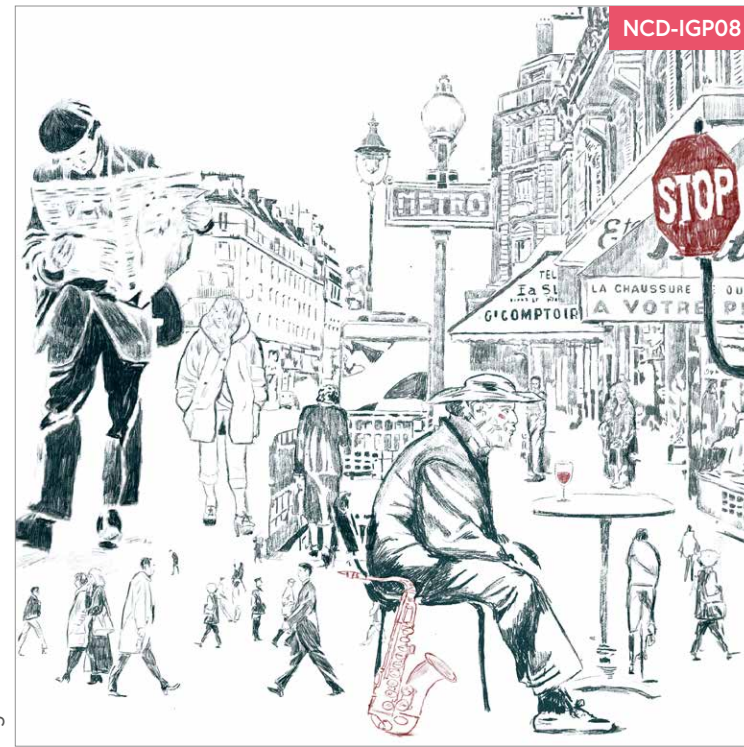
#Igea Paiano



#Igea Paiano



#Igea Paiano



#Igea Paiano



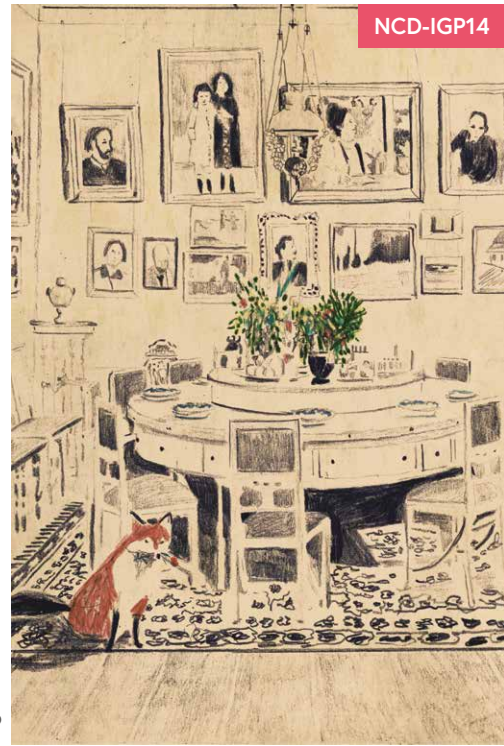
#Igea Paiano





NCD-IGP20

#Igea Paiano



NCD-IGP14

#Igea Paiano



NCD-IGP02

#Igea Paiano



NCD-IGP03

#Igea Paiano



NCD-IGP17

#Igea Paiano



NCD-IGP15

#Igea Paiano



NCD-IGP12

#Igea Paiano



NCD-IGP07

#Igea Paiano



#Igea Paiano



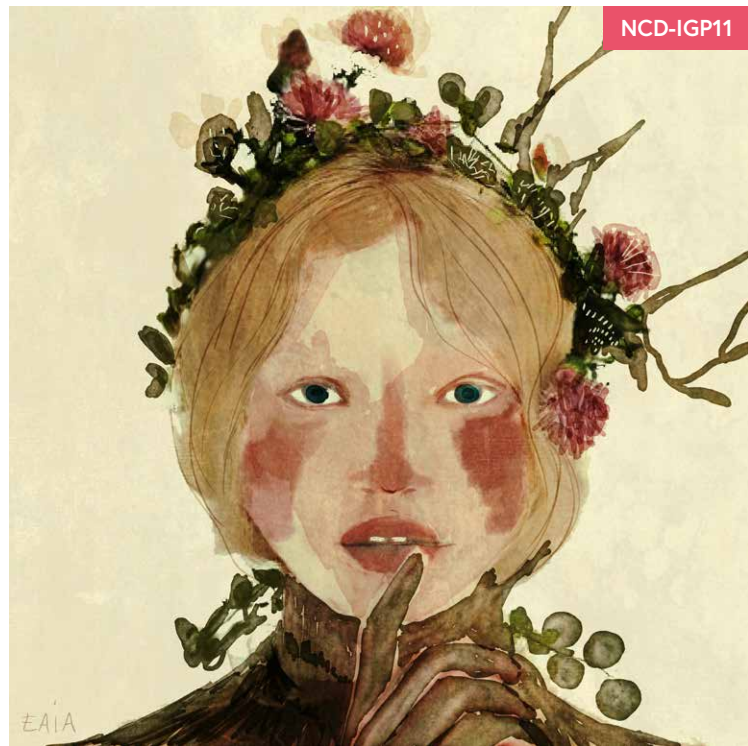
#Igea Paiano



#Igea Paiano



#Igea Paiano



#Igea Paiano



#Igea Paiano

Sabrina Luoni©

NCD-SLU

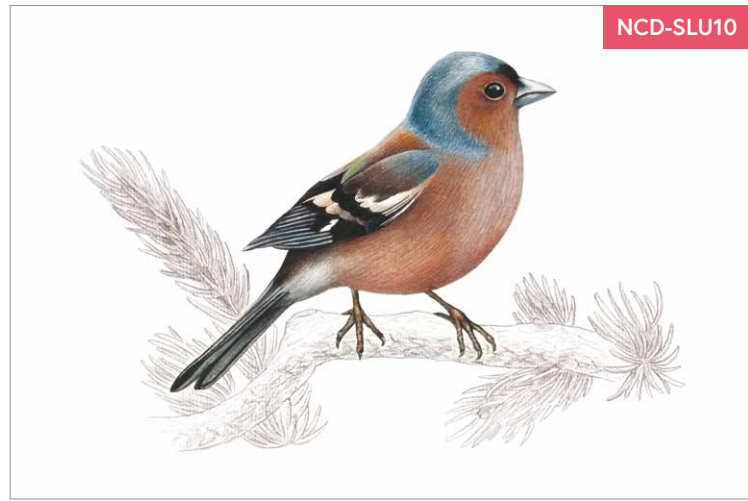
Un'immersione - per illustrazioni - nell'affascinante mondo della pittura botanica rappresentata attraverso delicati acquerelli. /

An immersion - for illustrations - in the fascinating world of botanical painting represented through delicate watercolours.



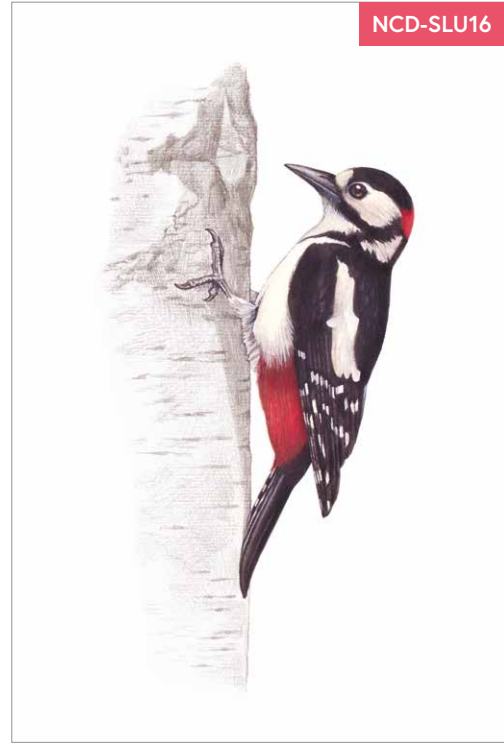
#Sabrina Luoni

#Sabrina Luoni



NCD-SLU10

#Sabrina Luoni



NCD-SLU16

#Sabrina Luoni



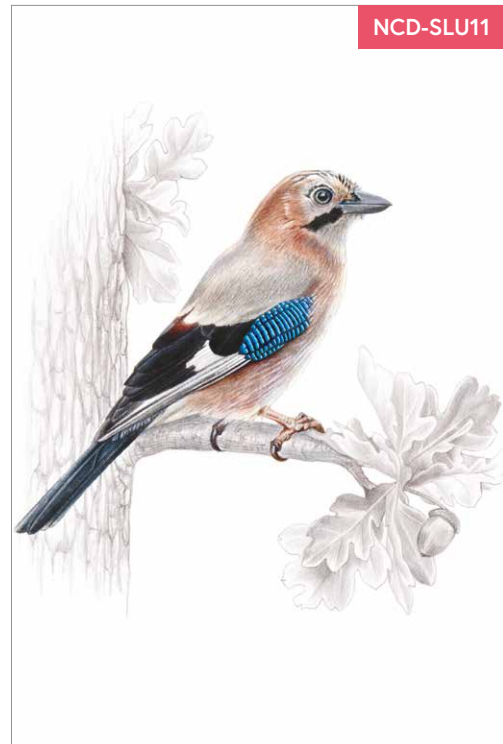
NCD-SLU15

#Sabrina Luoni



NCD-SLU18

#Sabrina Luoni



NCD-SLU11

#Sabrina Luoni



NCD-SLU05

#Sabrina Luoni



NCD-SLU09

#Sabrina Luoni



NCD-SLU06

#Sabrina Luoni



NCD-SLU12

#Sabrina Luoni



NCD-SLU07

#Sabrina Luoni



NCD-SLU17

#Sabrina Luoni



NCD-SLU02

#Sabrina Luoni



NCD-SLU08

#Sabrina Luoni



NCD-SLU19

NCD-TBK

Tathiana Blackdog©

Paesaggi naturali romantici e coinvolgenti nascono da scatti fotografici dove il mare è protagonista, con tutte le sue palette cromatiche. /

Romantic and engaging natural landscapes are born from photographic shots where the sea is the main character, with all its colour palettes.

#Tathiana Blackdog



NCD-TBK01

#Tathiana Blackdog



NCD-TBK09

#Tathiana Blackdog



NCD-TBK03

#Tathiana Blackdog



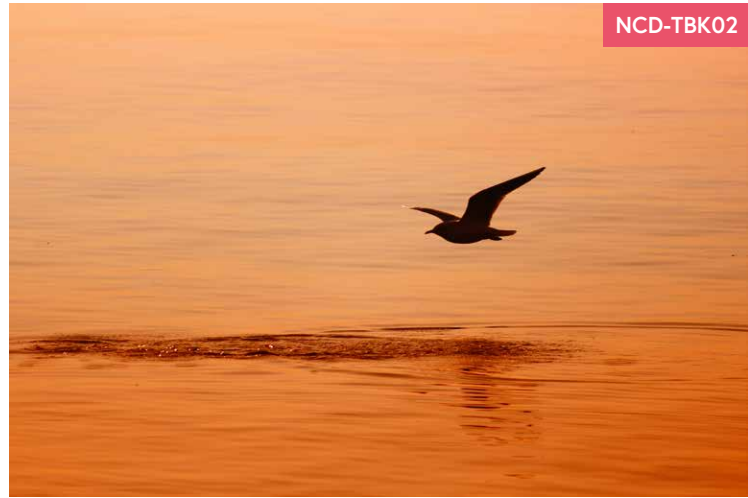
NCD-TBK05

#Tathiana Blackdog



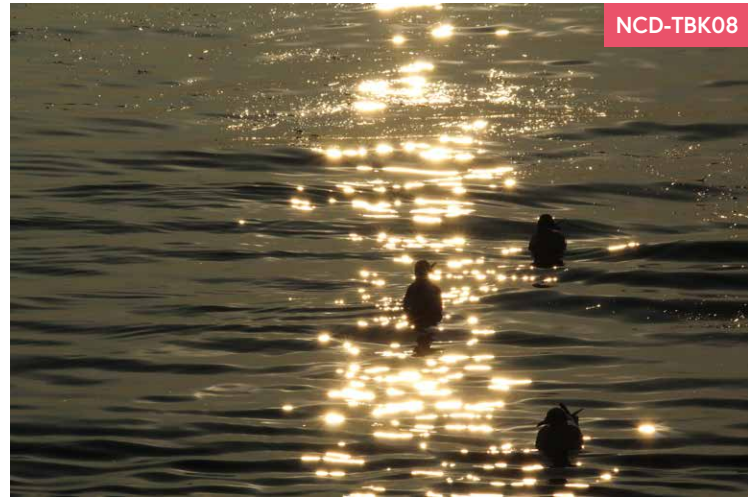
NCD-TBK07

#Tathiana Blackdog



NCD-TBK02

#Tathiana Blackdog



NCD-TBK08

#Tathiana Blackdog



NCD-TBK06

#Tathiana Blackdog



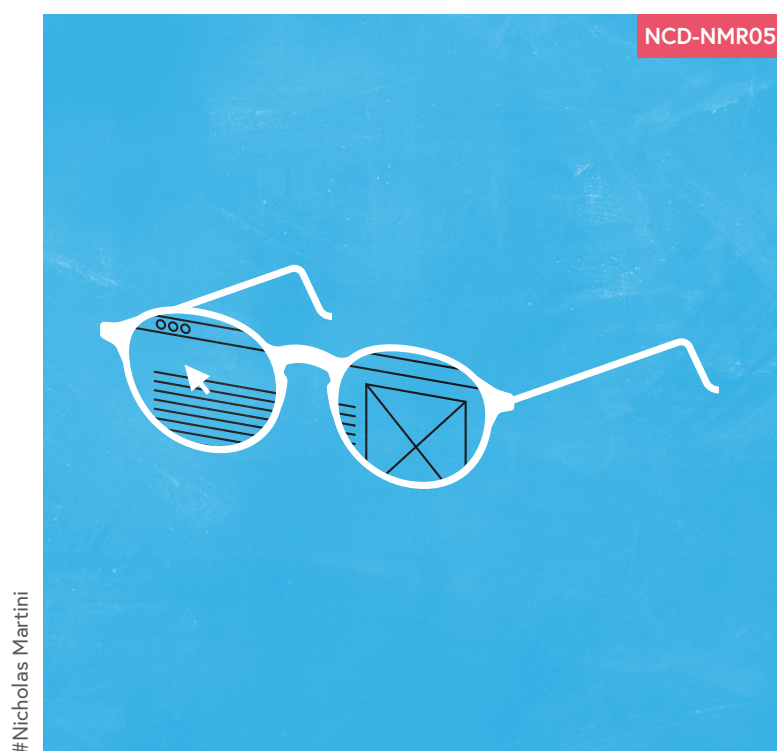
NCD-TBK04

Nicholas Martini©

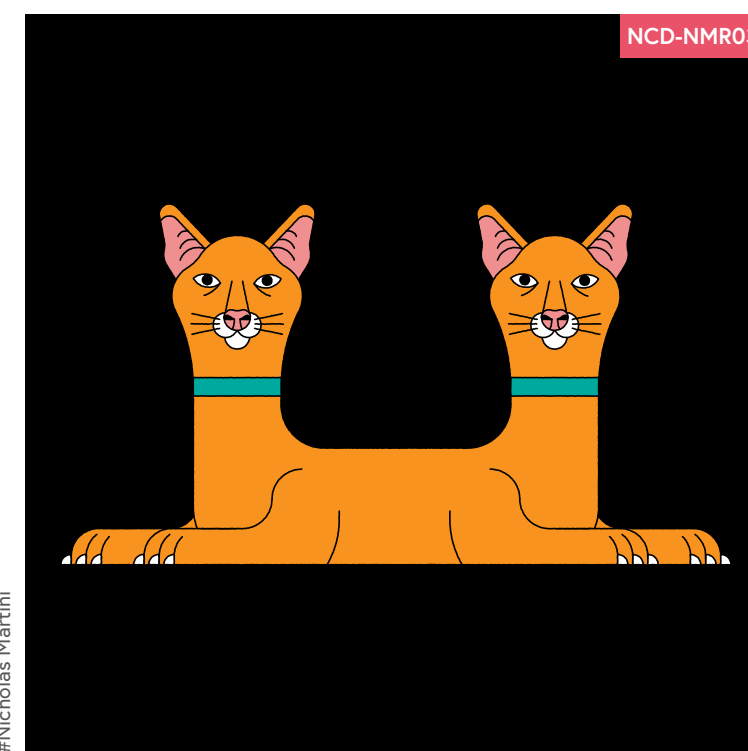
NCD-NMR

Una serie dedicata all'immagine in ogni sua forma: dalla fotografia alla pittura, le opere spaziano dall'analogico al digitale. /

A series dedicated to the image in all its shapes: from photography to painting, the works range from analog to digital.



#Nicholas Martini



#Nicholas Martini



#Nicholas Martini



#Nicholas Martini



#Nicholas Martini

Candia Castellani©

NCD-CCS

Dalle illustrazioni prendono vita storie nascoste che raccontano mondi reali ma anche tanti altri piccoli mondi che nascono da riflessioni, emozioni e coscienze. /

From illustrations hidden stories come to life, they tell real worlds but also many other small worlds that arise from reflections, emotions, and consciences.

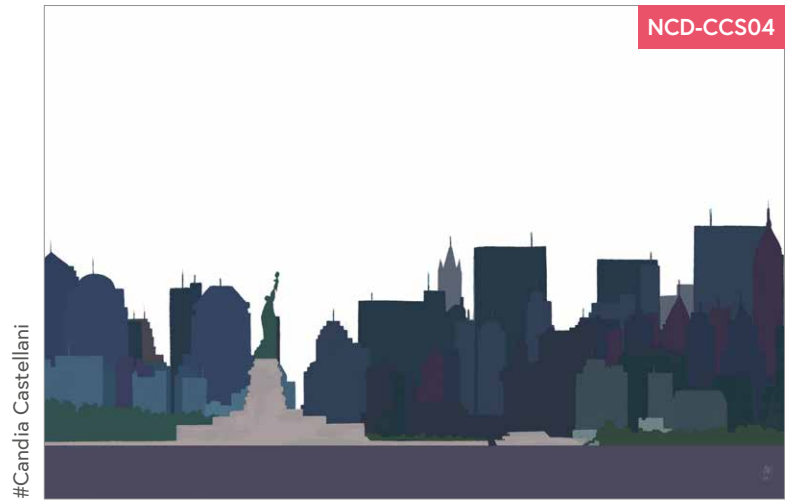


#Candia Castellani



NCD-CCS05

#Candia Castellani



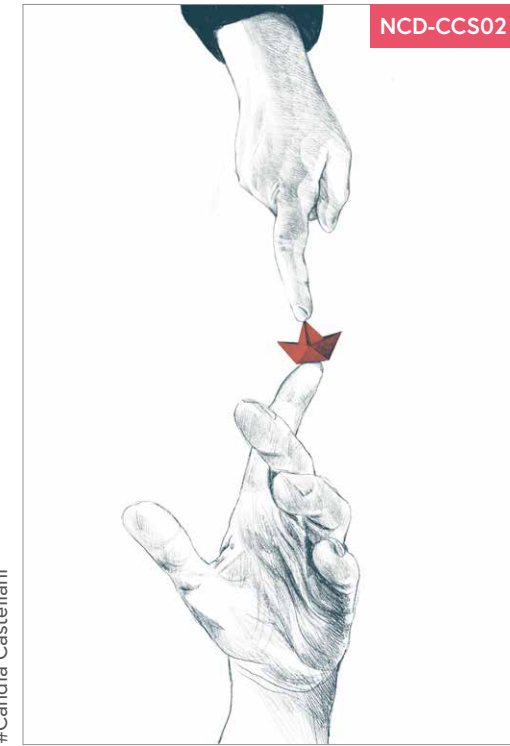
NCD-CCS04

#Candia Castellani



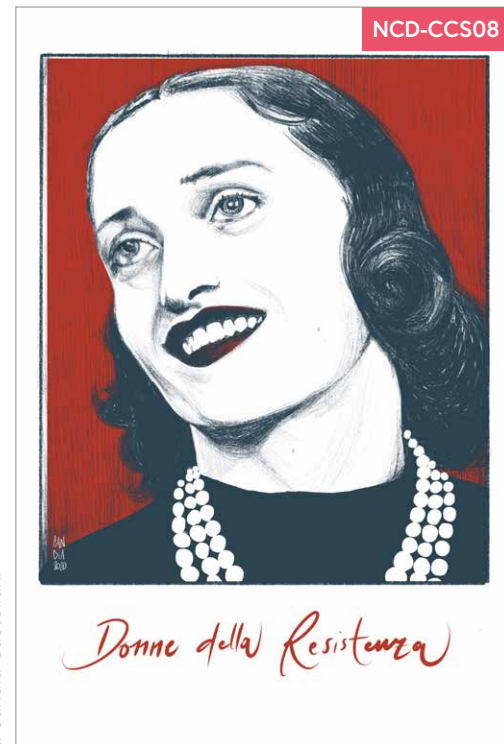
NCD-CCS01

#Candia Castellani



NCD-CCS02

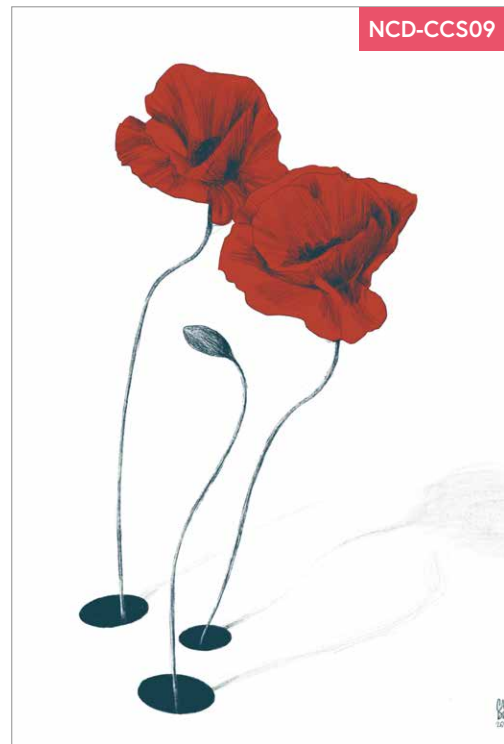
#Candia Castellani



NCD-CCS08

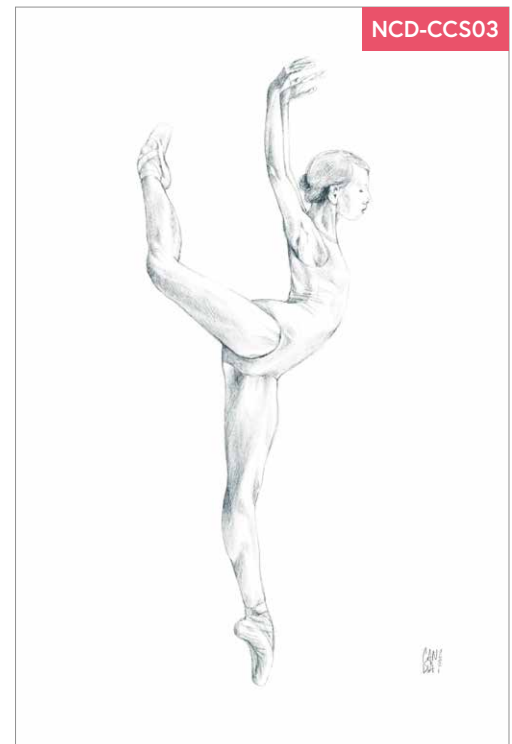
#Candia Castellani

Donne della Resistenza



NCD-CCS09

#Candia Castellani



NCD-CCS03

#Candia Castellani



NCD-CCS10

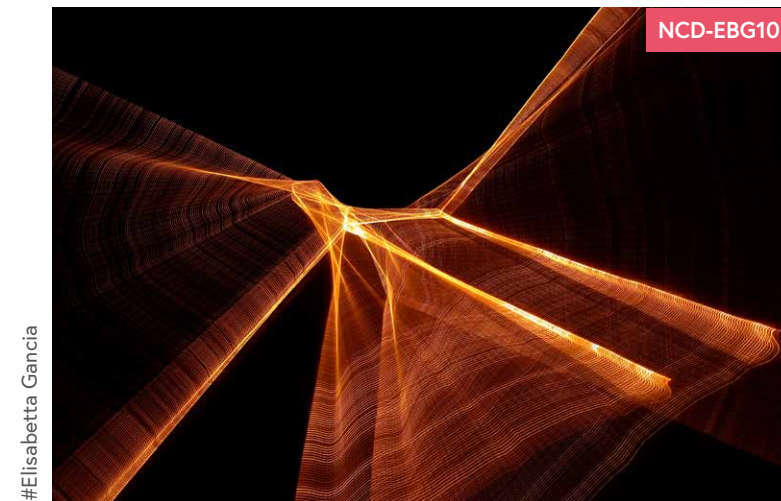
#Candia Castellani

Elisabetta Gancia©

NCD-EBG

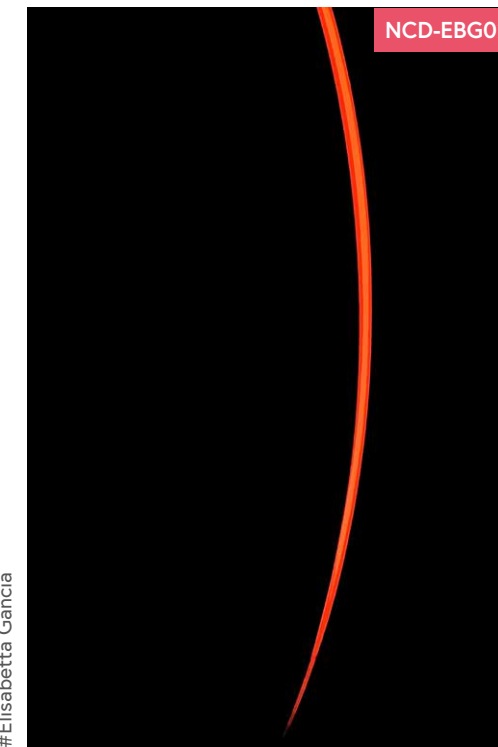
Fotografie particolari dove la grande protagonista è l'oscurità in cui la luce irrompe creando magiche spirali, lampi, forme geometriche creando l'illusione del movimento. /

Unique photos where the great protagonist is the darkness in which light bursts creating magical spirals, flashes of lightning, and geometric shapes giving the illusion of movement.



#Elisabetta Gancia

NCD-EBG10



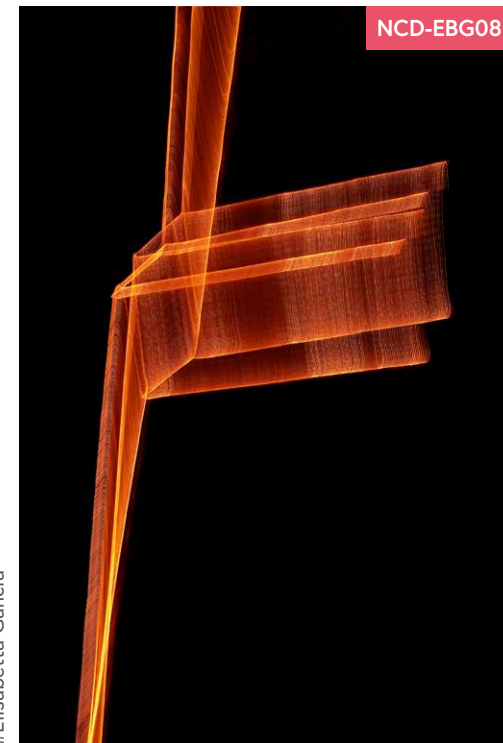
#Elisabetta Gancia

NCD-EBG02



#Elisabetta Gancia

NCD-EBG03



#Elisabetta Gancia

NCD-EBG08



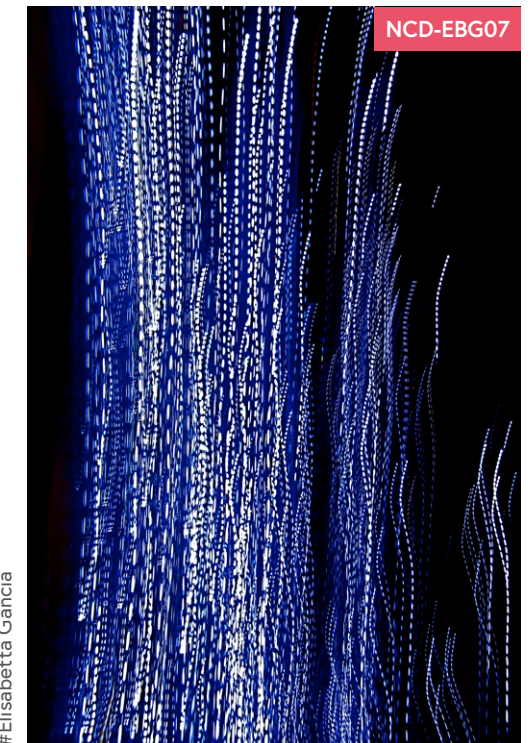
#Elisabetta Gancia

NCD-EBG09



#Elisabetta Gancia

NCD-EBG04



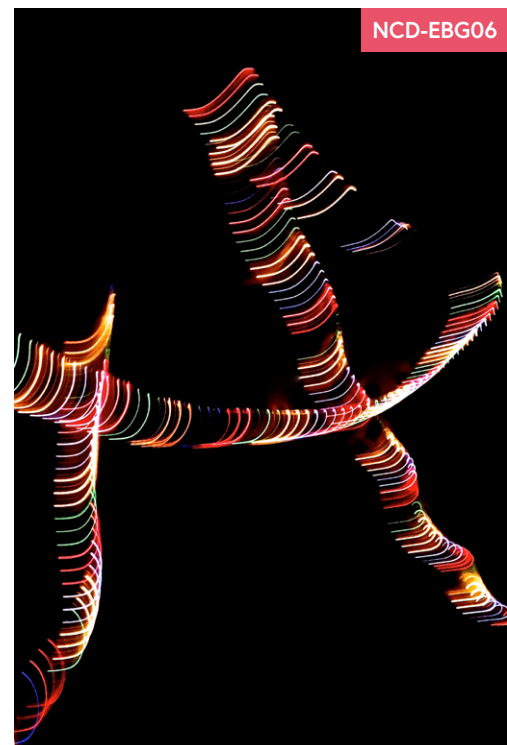
#Elisabetta Gancia

NCD-EBG07



NCD-EBG05

#Elisabetta Gancia



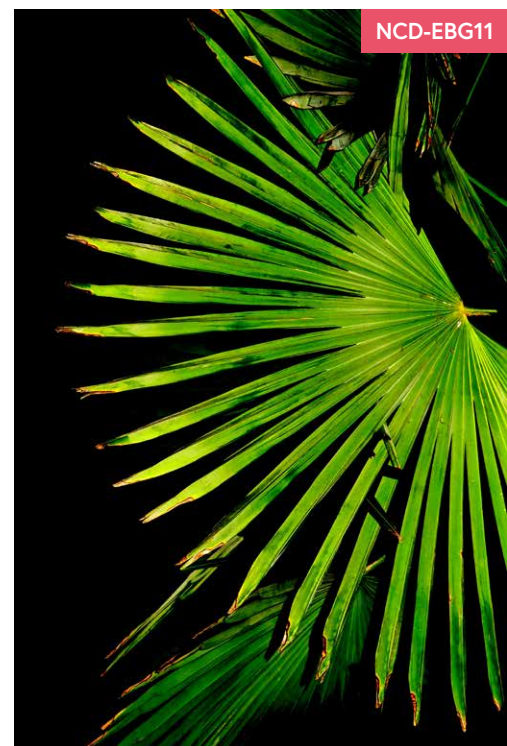
NCD-EBG06

#Elisabetta Gancia



NCD-EBG01

#Elisabetta Gancia



NCD-EBG11

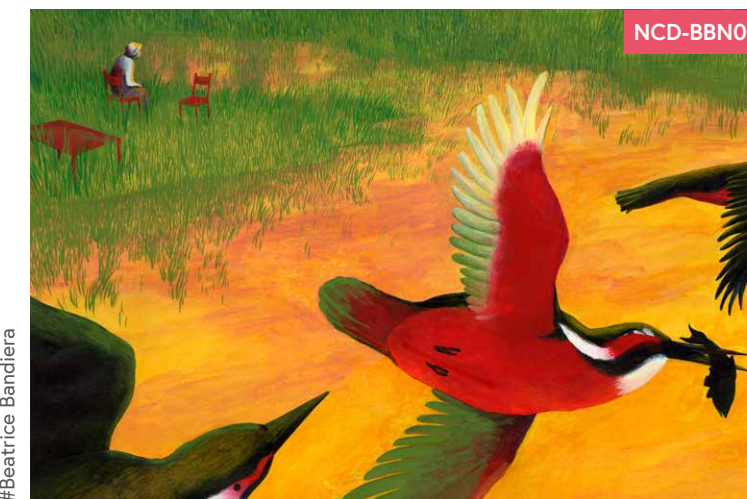
#Elisabetta Gancia

Beatrice Bandiera©

NCD-BBN

Atmosfere misteriose in bilico tra sogno e favola: le illustrazioni sono specchi nei quali possiamo riconoscere il nostro mondo interiore. /

Mysterious atmospheres in the balance between dream and fairy tale: illustrations are mirrors in which we can recognize our inner world.



NCD-BBN03

#Beatrice Bandiera



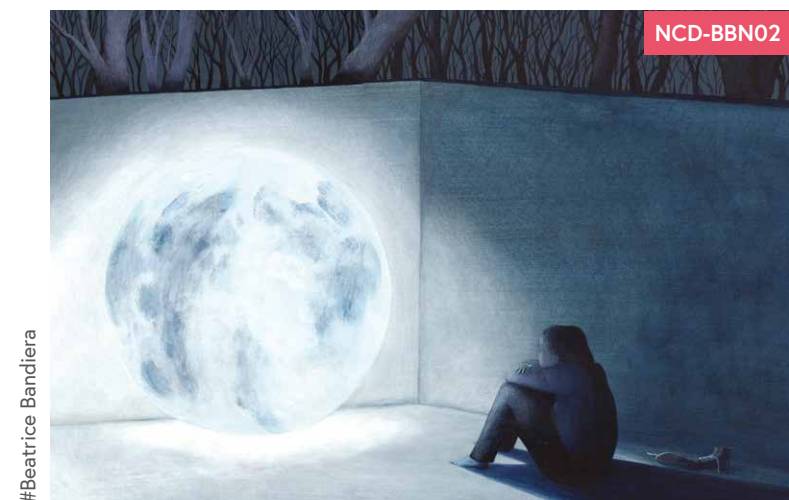
NCD-BBN01

#Beatrice Bandiera



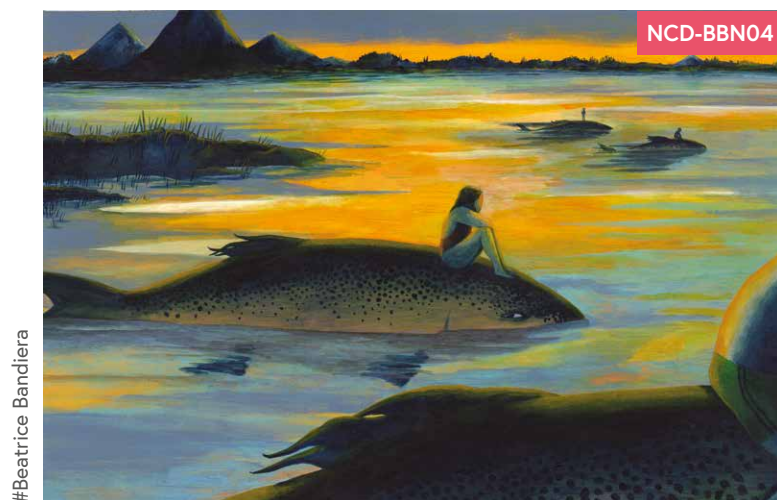
NCD-BBN05

#Beatrice Bandiera



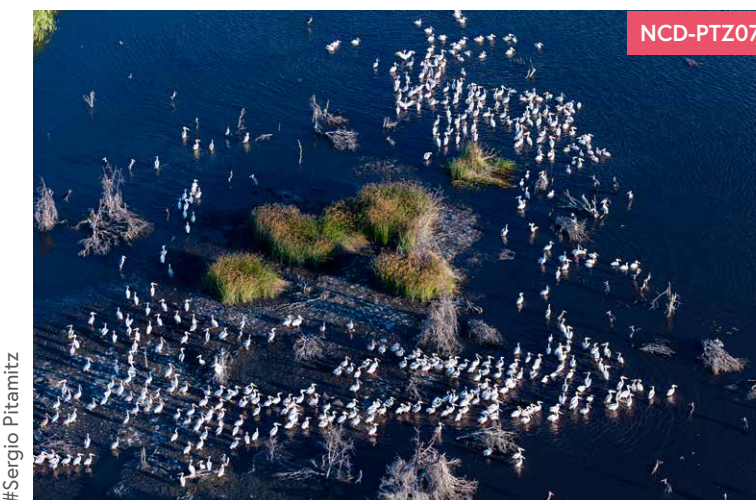
NCD-BBN02

#Beatrice Bandiera



NCD-BBN04

#Beatrice Bandiera



NCD-PTZ07

#Sergio Pitamitz



NCD-PTZ13

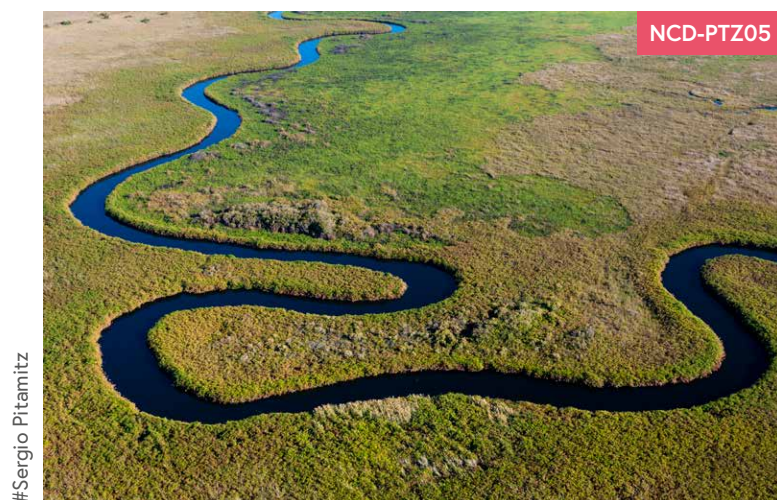
#Sergio Pitamitz

NCD-PTZ

Sergio Pitamitz©

Fauna africana, grandi felini e regioni polari: attraverso fotografie documentaristiche vengono mostrate le bellezze della natura e di animali selvatici. /

African fauna, big cats, and polar regions: documentary photographs show the beauty of nature and wild animals.



NCD-PTZ05

#Sergio Pitamitz



NCD-PTZ14

#Sergio Pitamitz



NCD-PTZ08

#Sergio Pitamitz

#Sergio Pitamitz



NCD-PTZ46

#Sergio Pitamitz



NCD-PTZ26

#Sergio Pitamitz



NCD-PTZ24

#Sergio Pitamitz



NCD-PTZ06

#Sergio Pitamitz



NCD-PTZ11

#Sergio Pitamitz



NCD-PTZ12

#Sergio Pitamitz



NCD-PTZ25

#Sergio Pitamitz



NCD-PTZ45



NCD-PTZ09

#Sergio Pitamitz



NCD-PTZ10

#Sergio Pitamitz



NCD-PTZ44

#Sergio Pitamitz



NCD-PTZ41

#Sergio Pitamitz



NCD-PTZ04

#Sergio Pitamitz



NCD-PTZ17

#Sergio Pitamitz



NCD-PTZ40

#Sergio Pitamitz



NCD-PTZ15

#Sergio Pitamitz



NCD-PTZ16

#Sergio Pitamitz



NCD-PTZ32

#Sergio Pitamitz



NCD-PTZ43

#Sergio Pitamitz



NCD-PTZ20

#Sergio Pitamitz



NCD-PTZ30

#Sergio Pitamitz



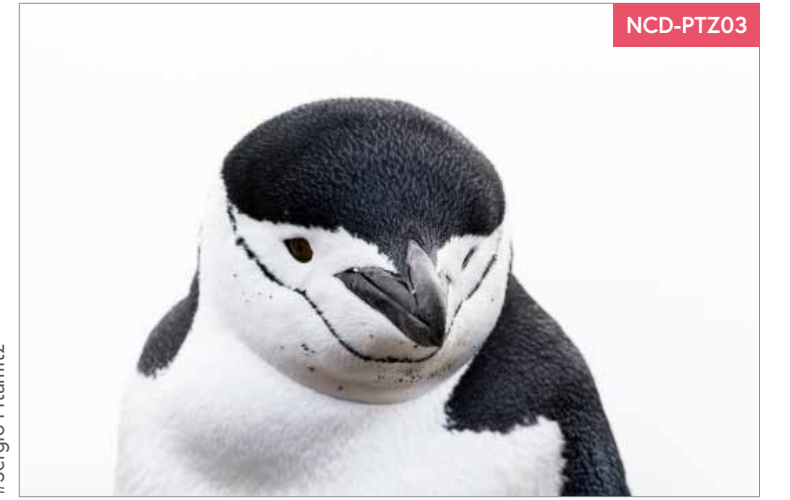
NCD-PTZ42

#Sergio Pitamitz



NCD-PTZ36

#Sergio Pitamitz



NCD-PTZ03

#Sergio Pitamitz

#Sergio Pitamitz



NCD-PTZ35

#Sergio Pitamitz



NCD-PTZ19

#Sergio Pitamitz



NCD-PTZ29

#Sergio Pitamitz



NCD-PTZ39

#Sergio Pitamitz



NCD-PTZ21

#Sergio Pitamitz



NCD-PTZ22

#Sergio Pitamitz



NCD-PTZ27

#Sergio Pitamitz



NCD-PTZ31

#Sergio Pitamitz



NCD-PTZ34

#Sergio Pitamitz



NCD-PTZ33

#Sergio Pitamitz



NCD-PTZ23

#Sergio Pitamitz



NCD-PTZ37

#Lara Montresor



NCD-LMT02

Lara Montresor©

NCD-LMT

Editoria, pubblicità, illustrazioni per bambini dove la realtà è una manifestazione personale rappresentata mescolando forme geometriche, tinte piatte con linee morbide e texture leggere./

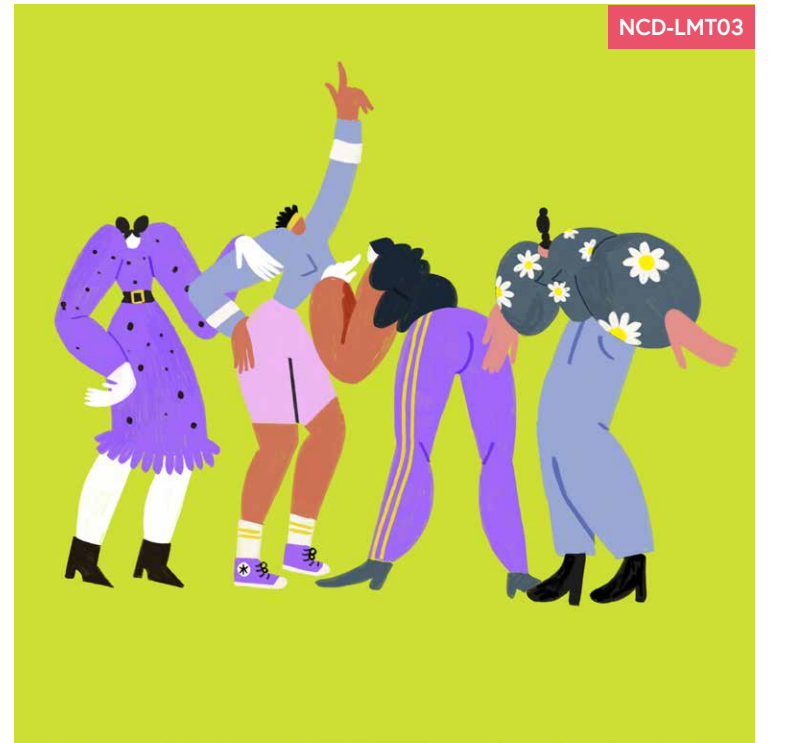
Editorials and advertising images, infant illustrations where reality is expression of a personal point of view mixing geometric shapes, spot colours with soft lines and light textures.

#Lara Montresor



NCD-LMT01

#Lara Montresor



NCD-LMT03



NCD-LMT04

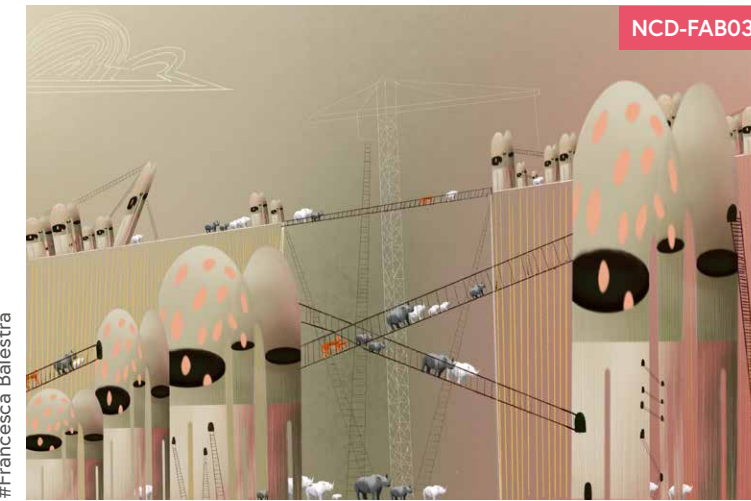
#Lara Montresor

NCD-FAB

Francesca Balestra©

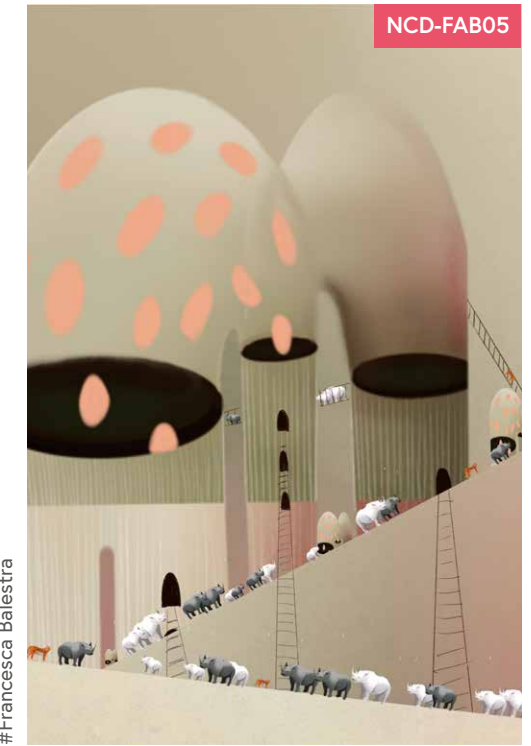
Città fantastiche e ricche di particolari contraddistinguono illustrazioni con palette di colori definite: sono mondi abitati da personaggi ombra e animali miniaturizzati. /

Fantastic cities full of details distinguish illustrations with the defined color palette: they are worlds inhabited by shadow characters and miniature animals.



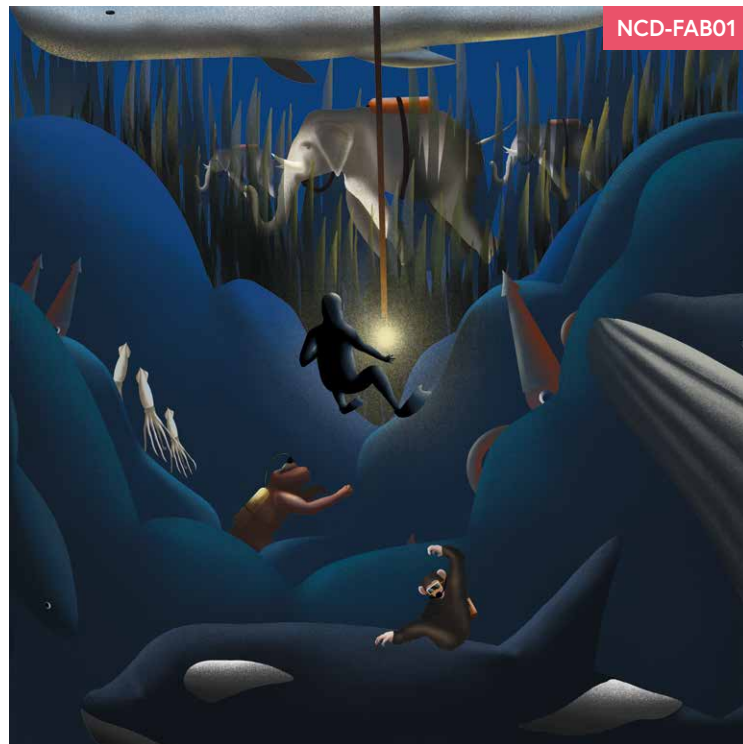
NCD-FAB03

#Francesca Balestra



NCD-FAB05

#Francesca Balestra



NCD-FAB01

#Francesca Balestra



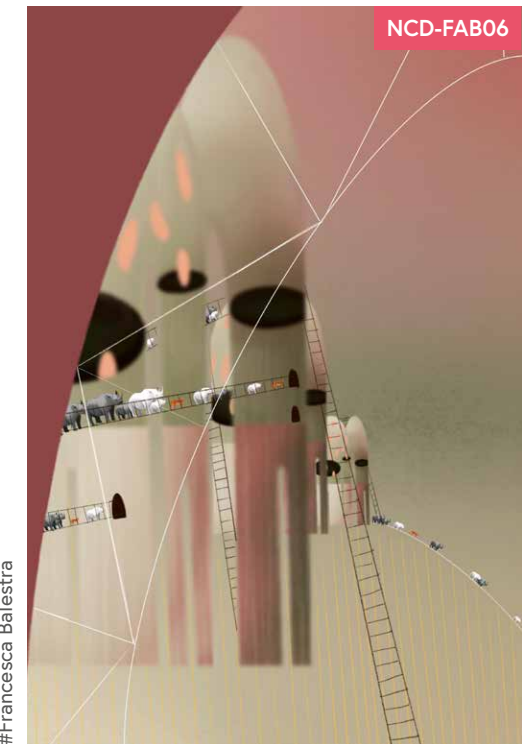
NCD-FAB07

#Francesca Balestra



NCD-FAB04

#Francesca Balestra



NCD-FAB06

#Francesca Balestra

NCD-RNC

Carolina©

Un personale racconto fotografico sulle tracce che l'uomo, nel corso del tempo, ha lasciato dietro di sé. /

A personal photographic story on the traces that man, over time, has left behind him.



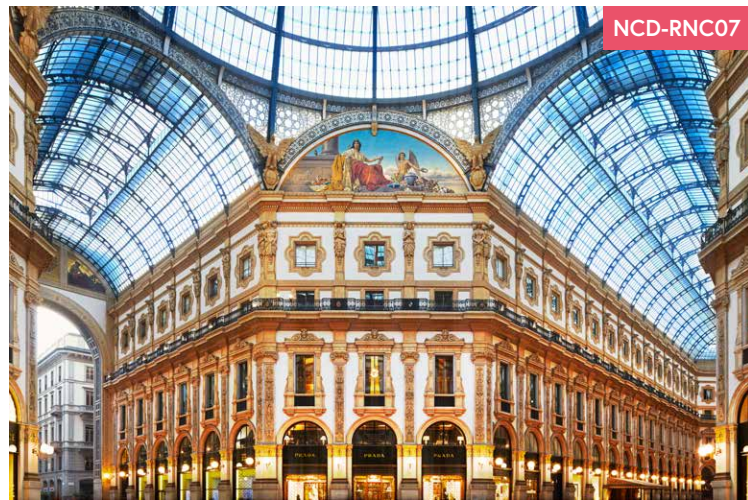
#Francesca Balestra



#Carolina



#Carolina



#Carolina



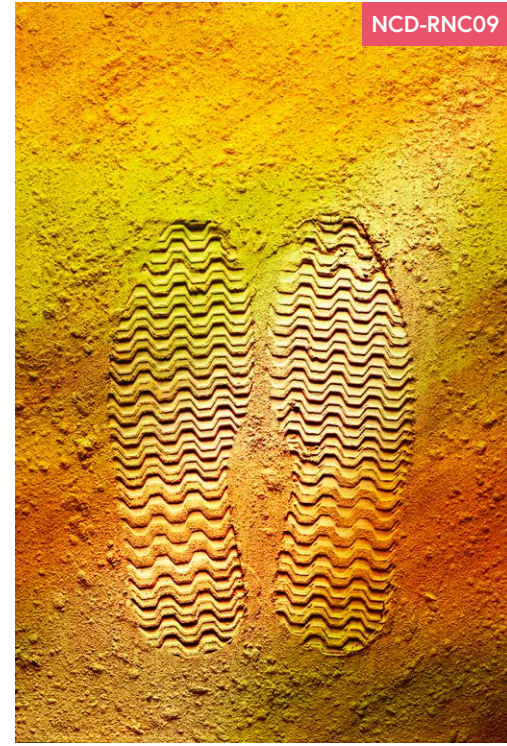
#Carolina



#Carolina



#Carolina



NCD-RNC09

#Carolina



NCD-RNC10

#Carolina



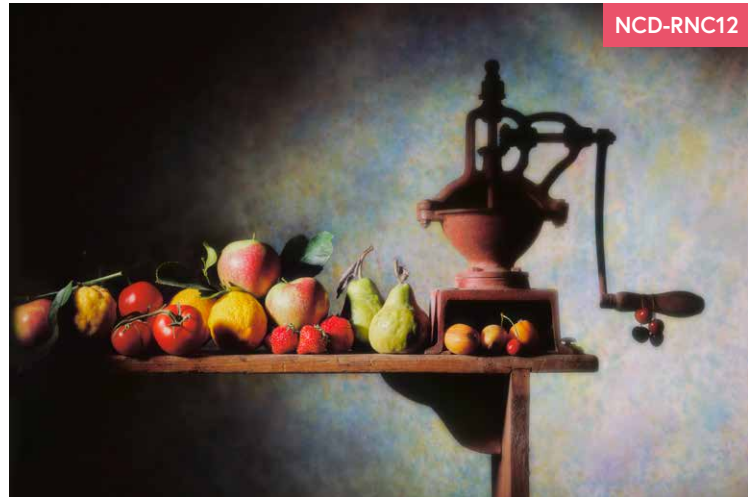
NCD-RNC02

#Carolina



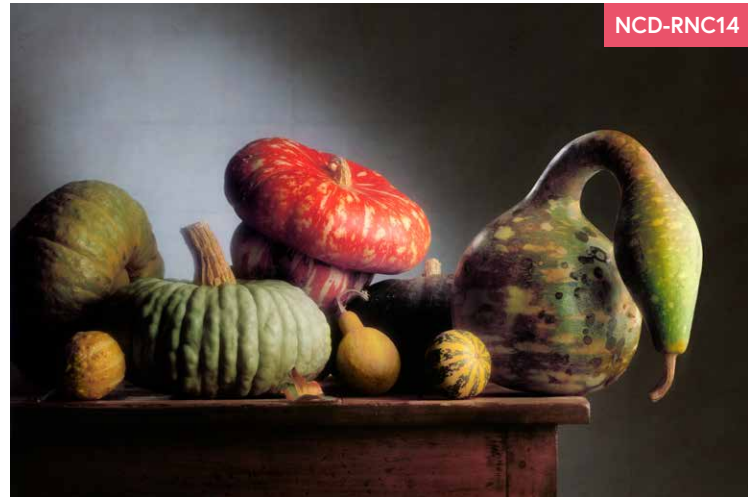
NCD-RNC06

#Carolina



NCD-RNC12

#Carolina



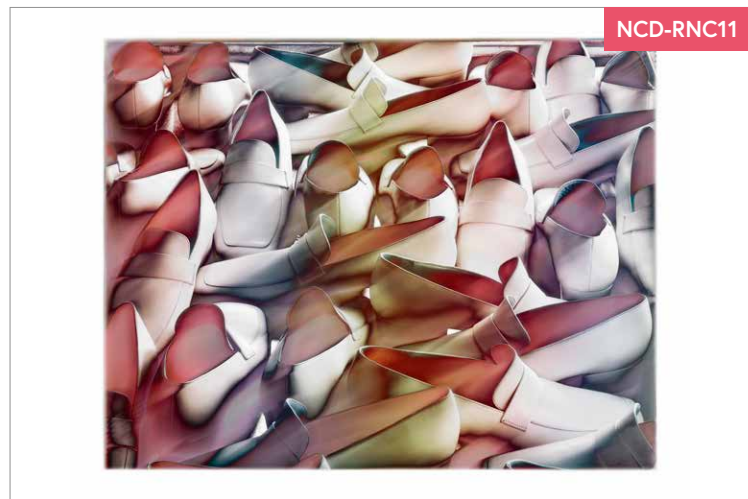
NCD-RNC14

#Carolina



NCD-RNC04

#Carolina



NCD-RNC11

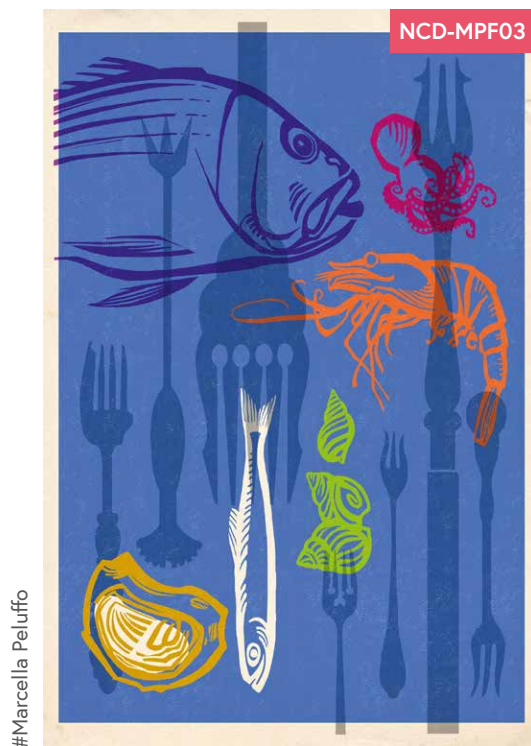
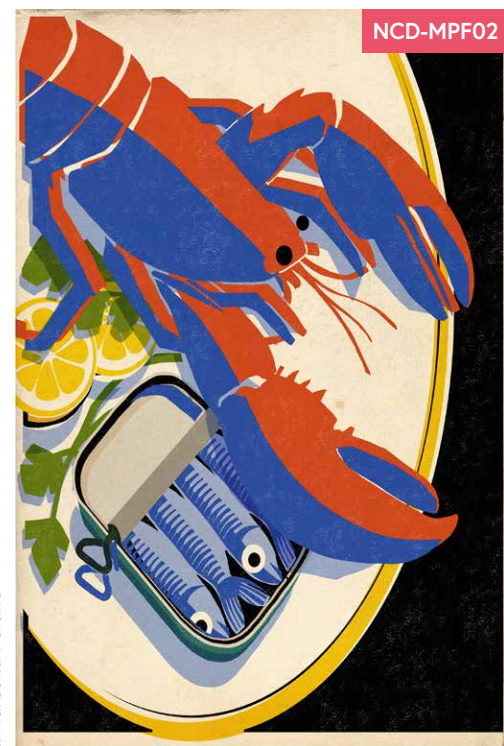
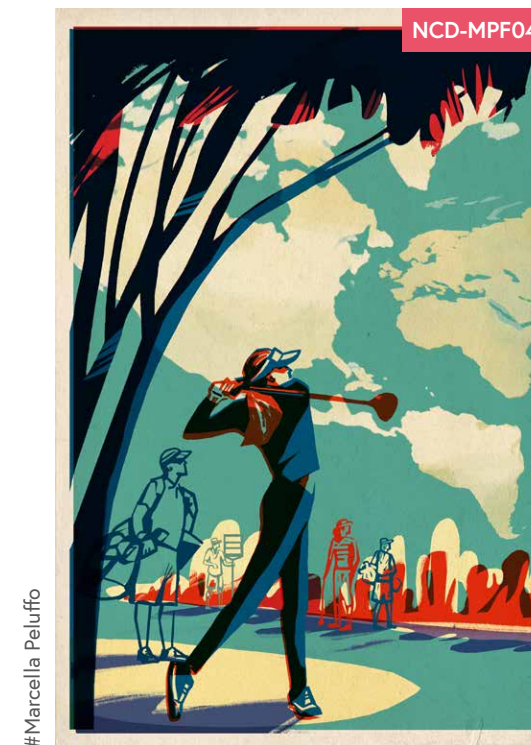
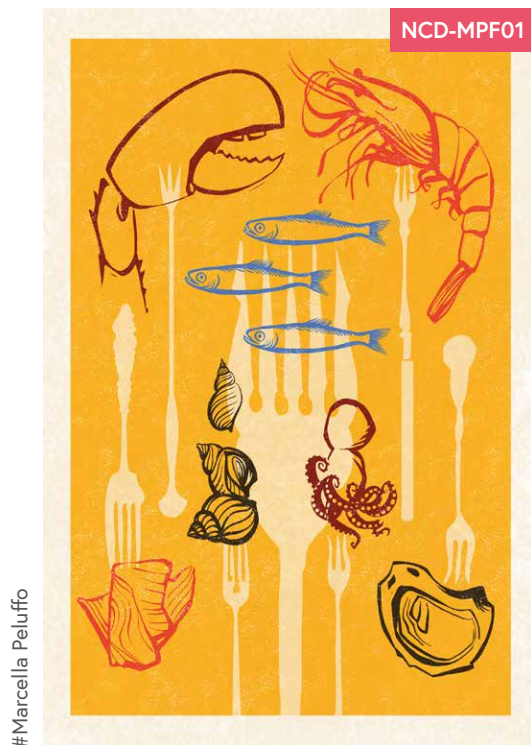
#Carolina

Marcella Peluffo©

NCD-MPF

I gesti del segno, il disegno realistico e la sua sintesi astratta, il lettering a mano: tecniche diverse si fondono in una serie di illustrazioni dal carattere deciso. /

The gestures of the sign, the realistic design and its abstract synthesis, and the lettering by hand: different techniques are based on a series of illustrations with a strong personality.





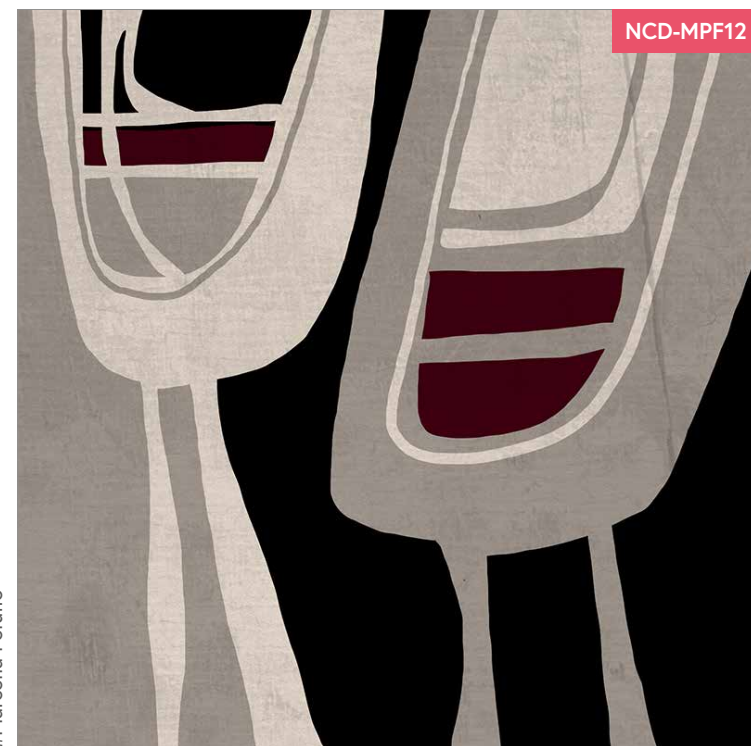
NCD-MPF08

#Marcella Peluffo



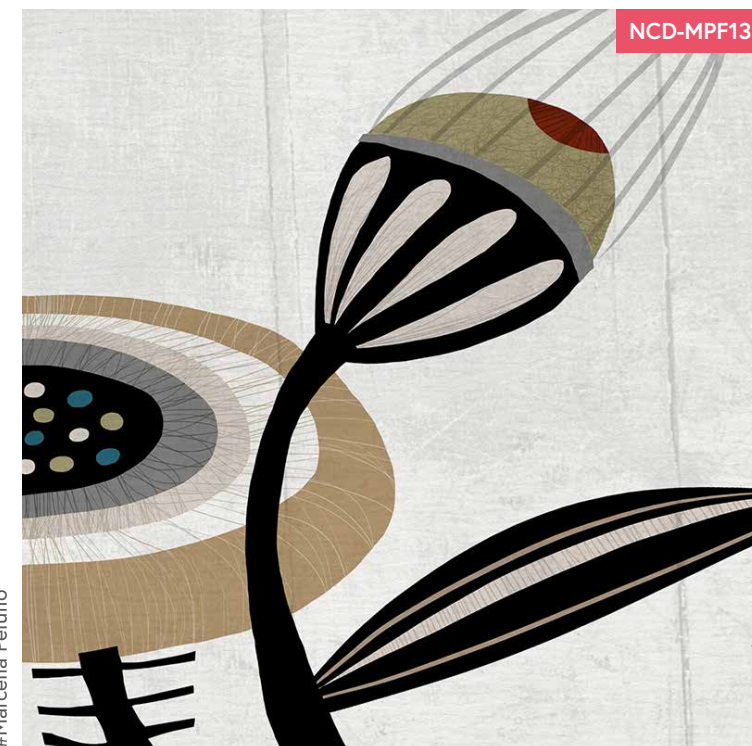
NCD-MPF09

#Marcella Peluffo



NCD-MPF12

#Marcella Peluffo



NCD-MPF13

#Marcella Peluffo



NCD-MPF10

#Marcella Peluffo



NCD-MPF11

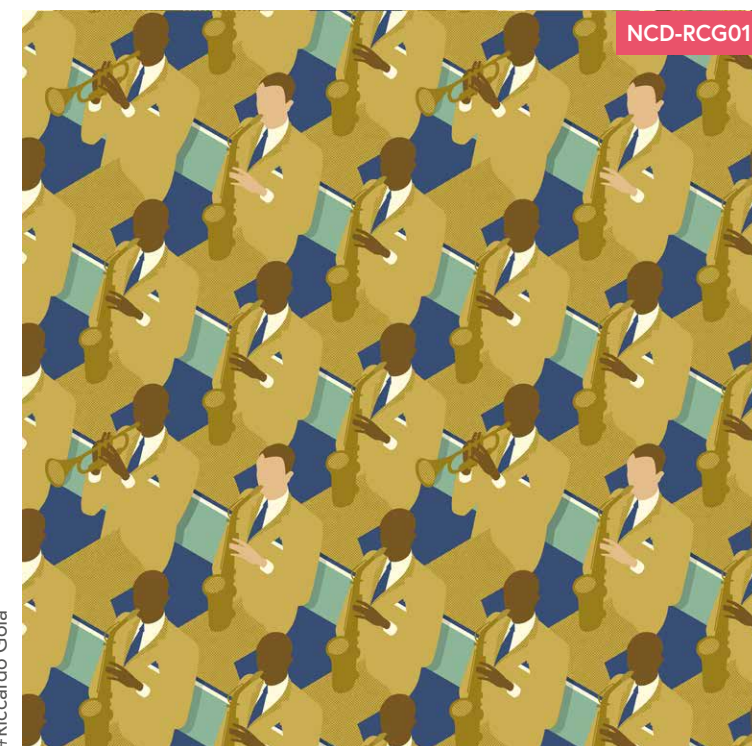
#Marcella Peluffo

Riccardo Gola©

NCD-RCG

Rappresentare l'impossibile per portare lo spettatore a spingersi un po' più in là, a immaginare ciò che, per esempio, la fotografia non può ritrarre. /

Representing the impossible leads the viewer to go a little further, to imagine what, for example, photography cannot portray.



NCD-RCG01

#Riccardo Gola



#Riccardo Gola



#Riccardo Gola



#Nicola Ferrarese



#Nicola Ferrarese



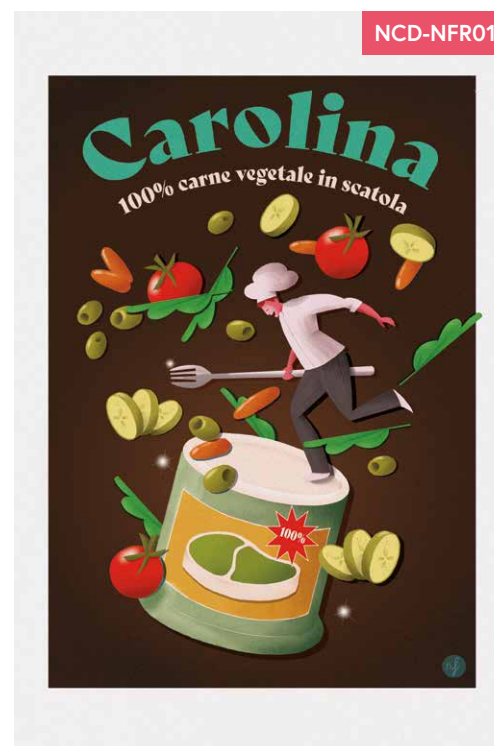
#Riccardo Gola

Nicola Ferrarese©

NCD-NFR

Temi surreali e note umoristiche si combinano in sorprendenti locandine: i personaggi sono i protagonisti, rappresentati con colori forti. /

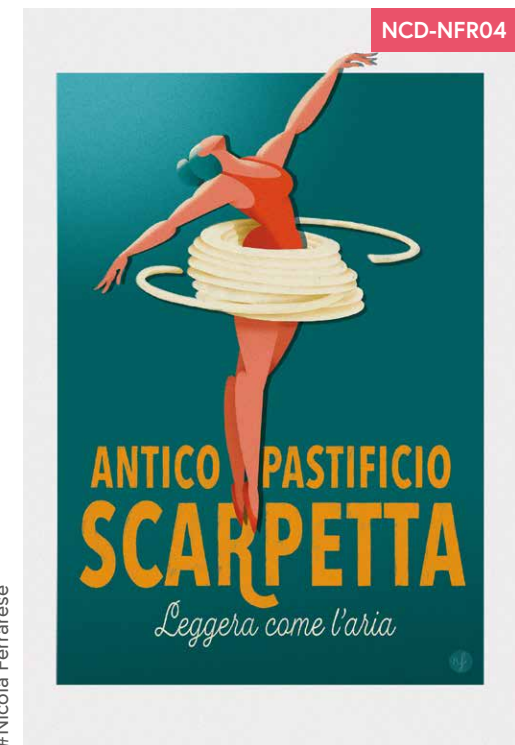
Surreal themes and humorous notes combine in surprising posters: the characters are the protagonists, represented with strong colours.



#Nicola Ferrarese



#Nicola Ferrarese

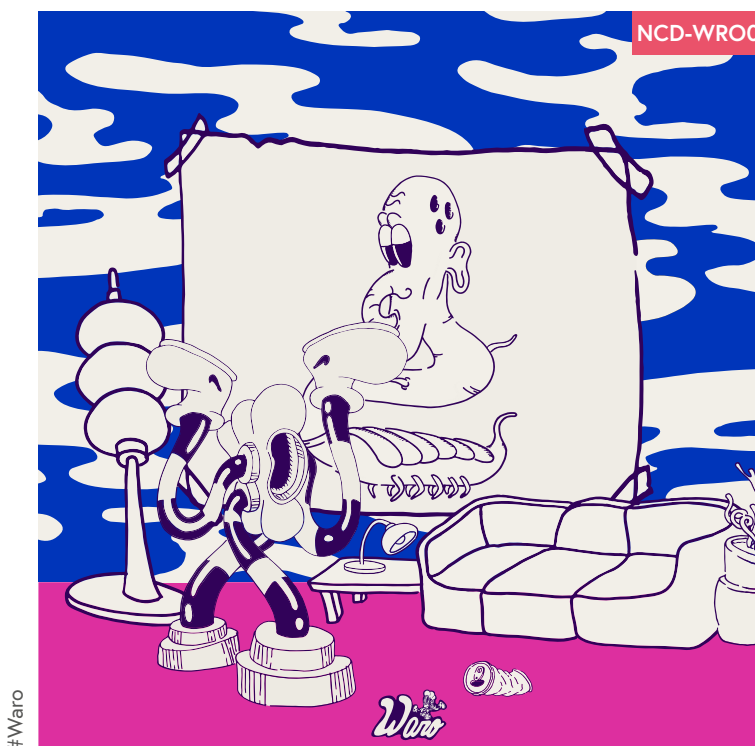
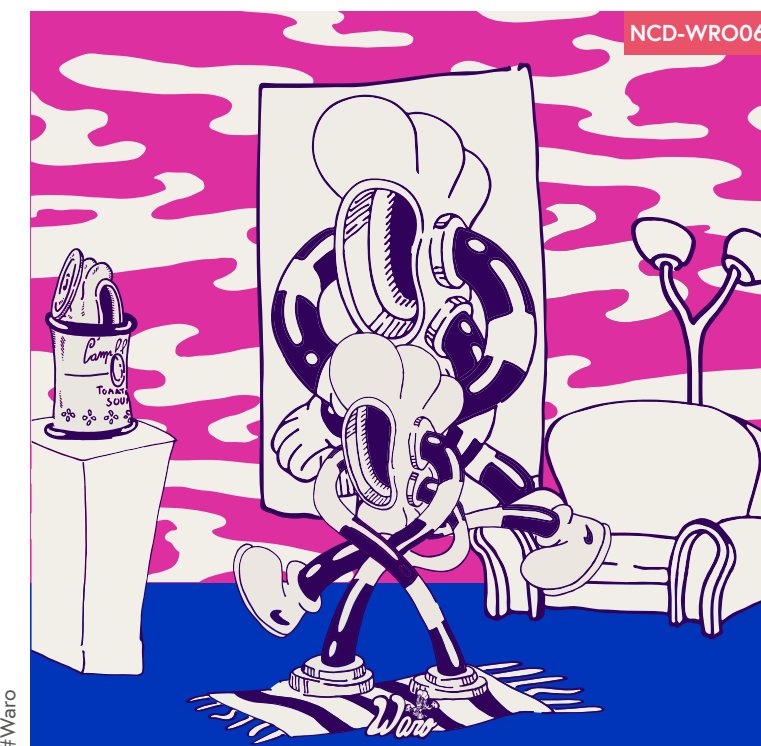
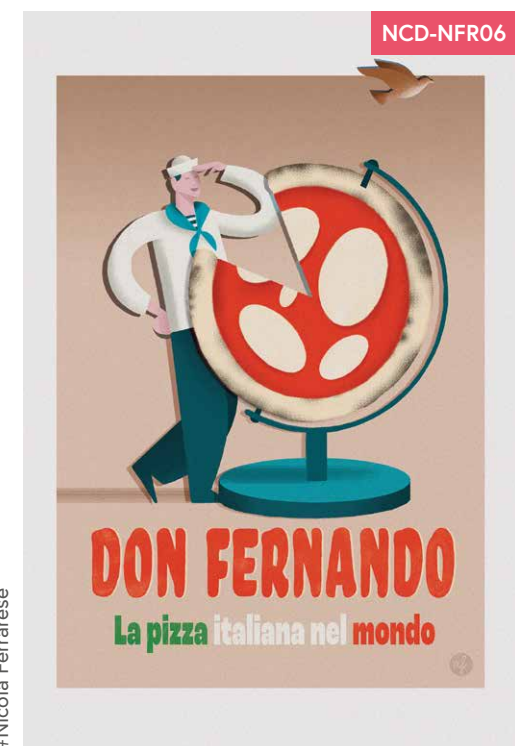
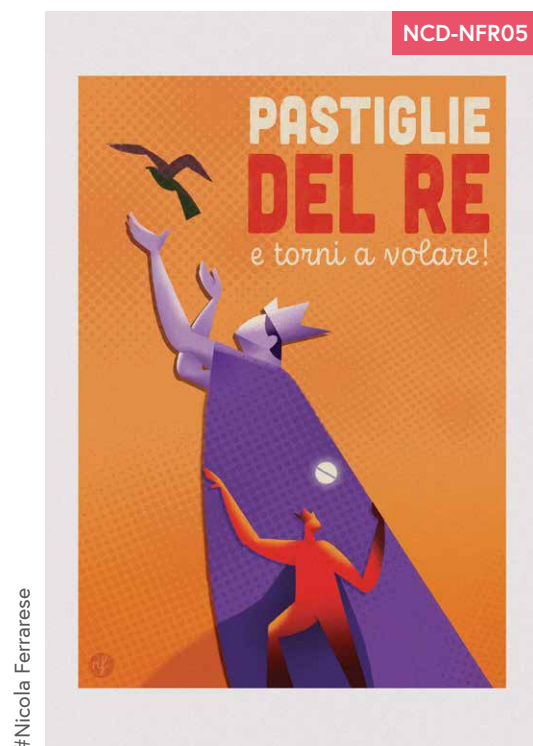
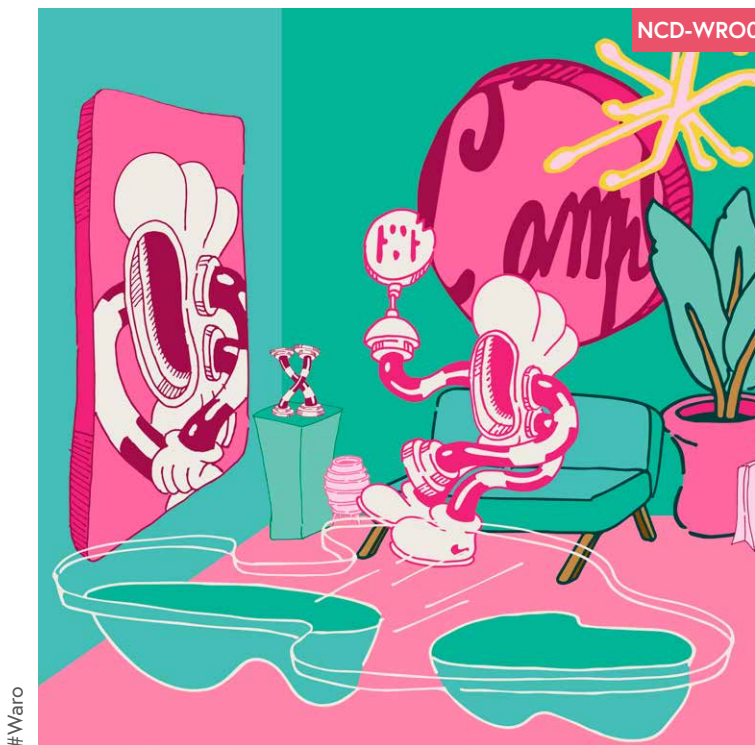


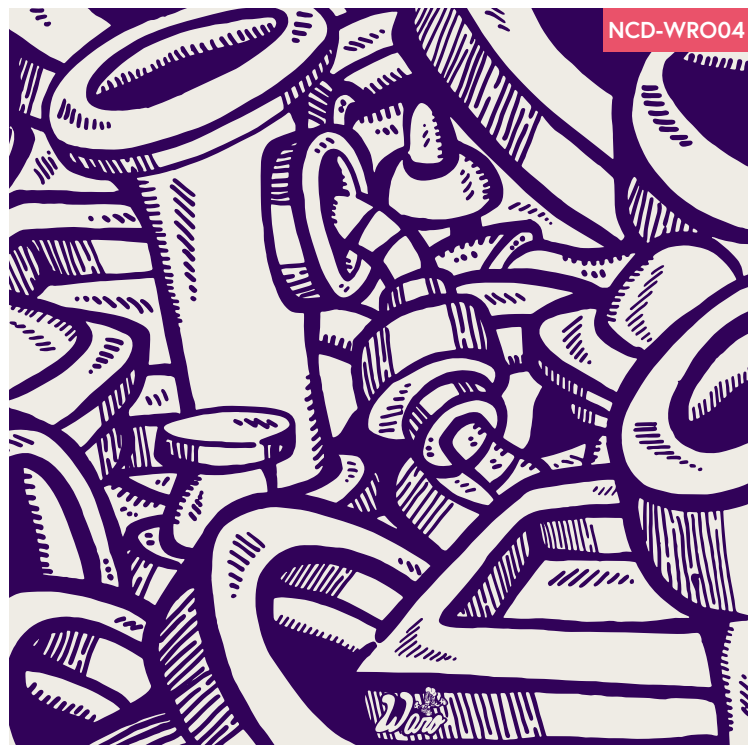
Waro©

NCD-WRO

Le linee si intersecano con colori pop creando mondi abitati da personaggi che attingono al vero. Lo stile è influenzato dalla street art e dal fumetto. /

The lines intersect with pop colours creating worlds inhabited by characters who draw from the truth. The style is influenced by street art and comics.





NCD-WRO04

#Waro



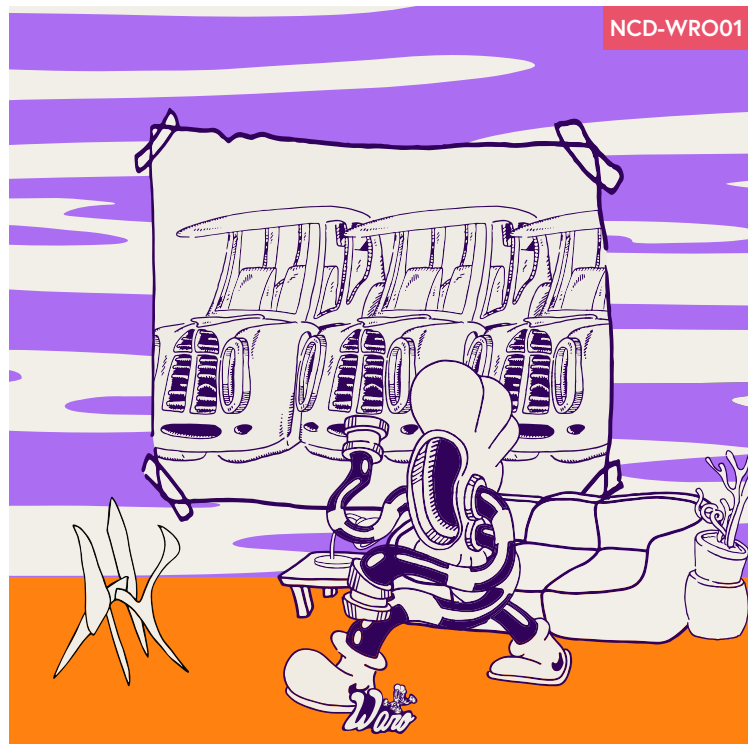
NCD-WRO03

#Waro



NCD-WRO07

#Waro



NCD-WRO01

#Waro



NCD-WRO02

#Waro



NCD-LMO03

#Livio Moiana



NCD-LMO07

#Livio Moiana

NCD-LMO

Livio Moiana©

Fotografie in bianco e nero attraverso le quali il corpo umano - protagonista assoluto con le sue linee, i suoi intrecci e contorsioni - esprime emozioni uniche.

Black and white photographs through which the human body - the absolute protagonist with its lines, weaves, and contortions - express unique emotions.



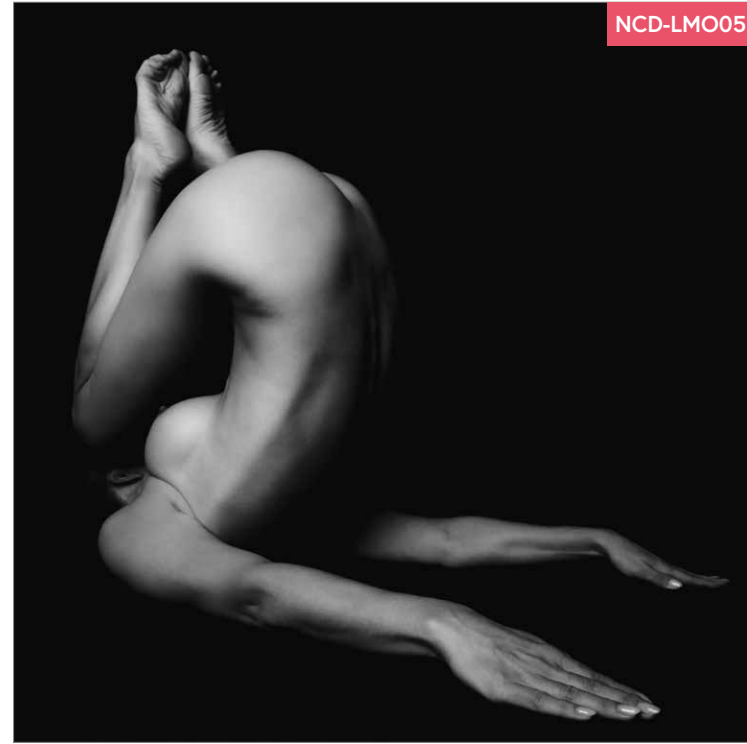
NCD-LMO06

#Livio Moiana



NCD-LMO04

#Livio Moiana



NCD-LMO05

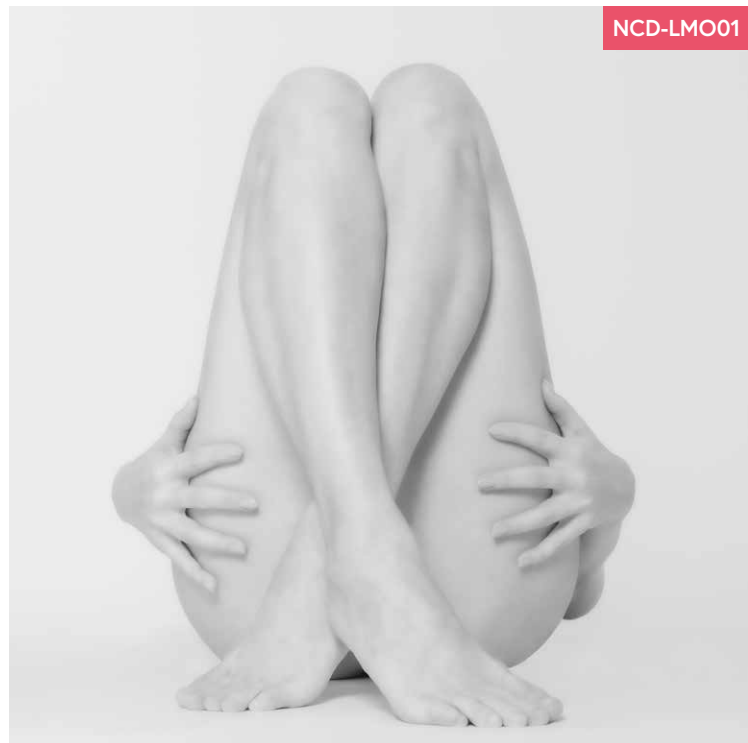
#Livio Moiana

Nadia Gelsomina©

NCD-NGM

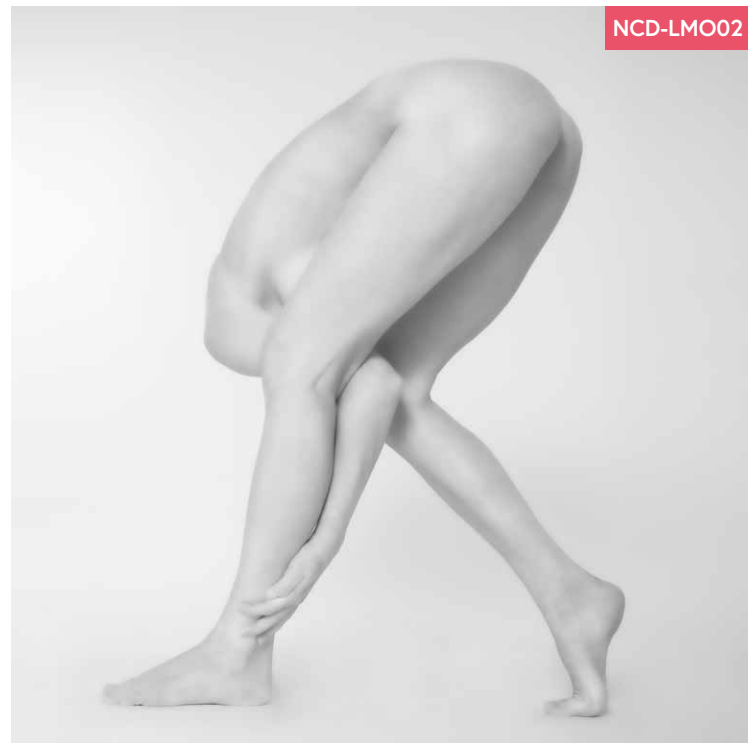
Colori intensi, pennellate morbide e calore. Il disegno è una linea dura e vorticoso di volti assorti o giocosamente inquisitori. /

Intense colours, soft brushstrokes and warmth. The design is a hard and swirling line of engrossed or playfully inquisitive faces.



NCD-LMO01

#Livio Moiana



NCD-LMO02

#Livio Moiana



NCD-NGM05

#Nadia Gelsomina

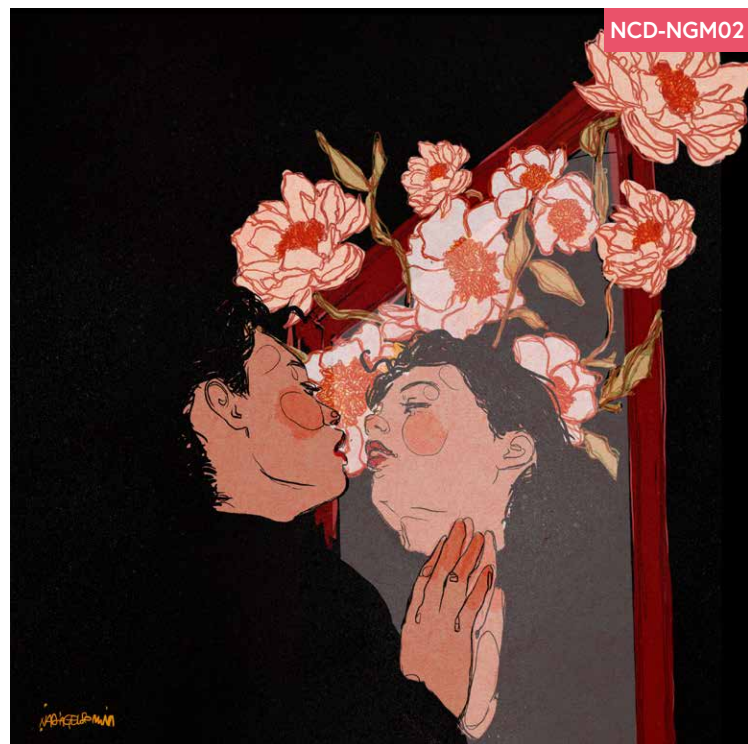


NCD-NGM03

#Nadia Gelsomina



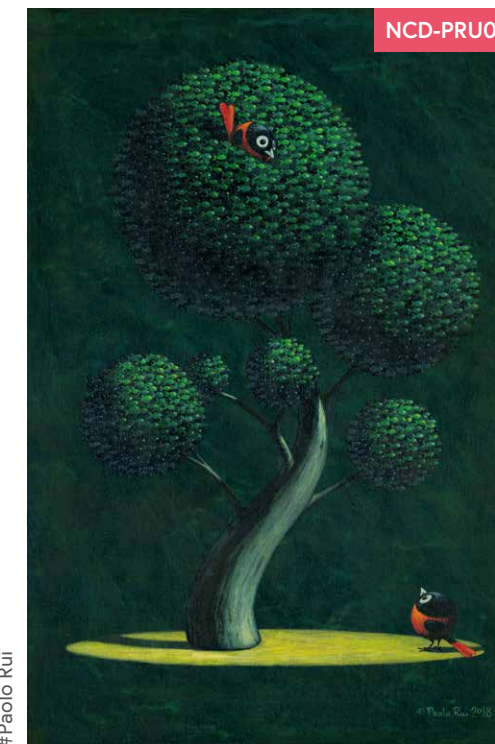
#Nadia Gelsomina



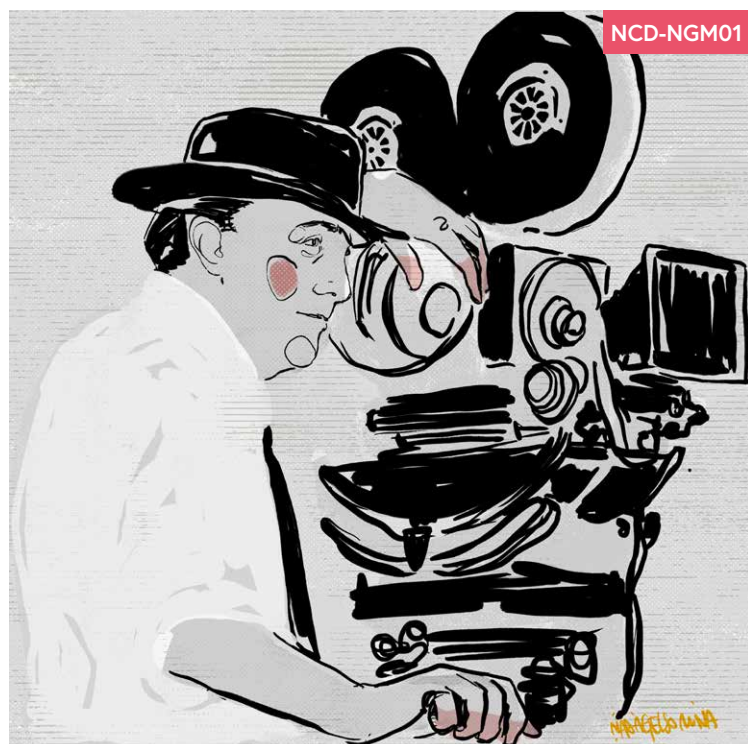
#Nadia Gelsomina



#Paolo Rui



#Paolo Rui



#Nadia Gelsomina

NCD-PRU

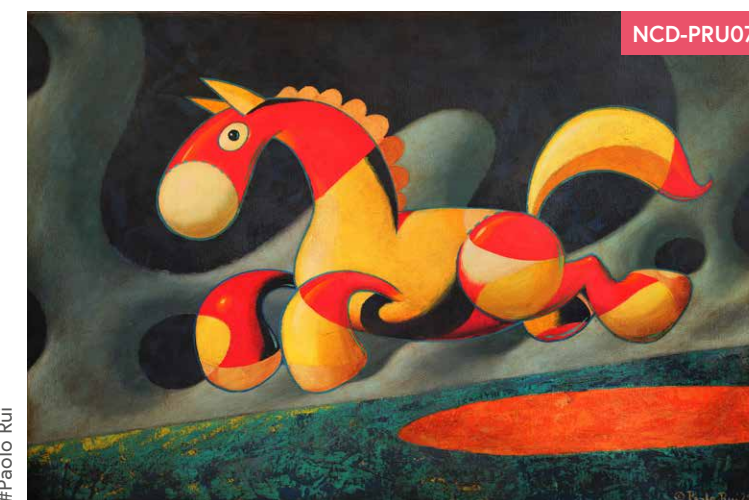
Paolo Rui©

Personaggi nati dalla distorsione della natura sono rappresentati in uno stile particolare, tutto si fa tondo in questa serie fantasiosa e fiabesca. /

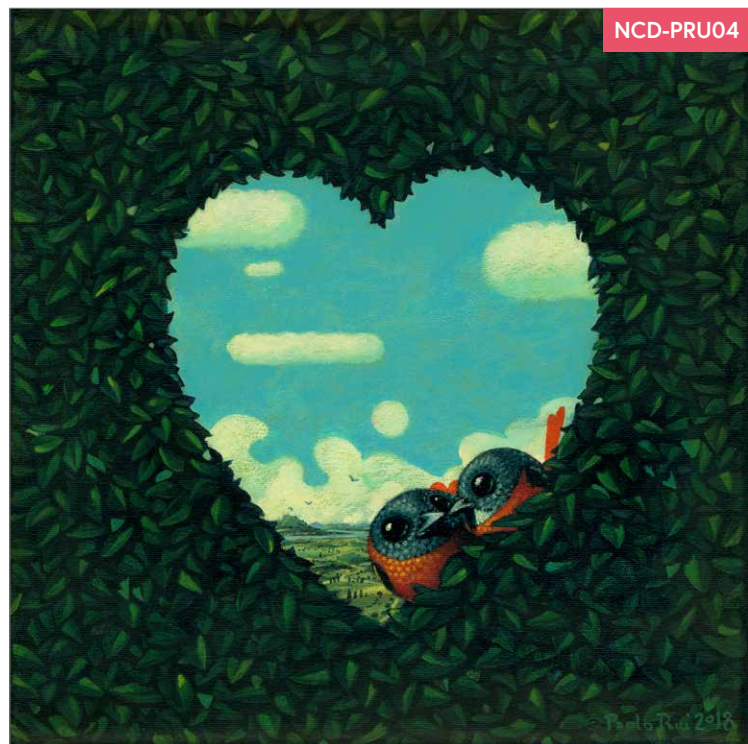
Characters born from the distortion of nature are represented in a particular style, everything gets around in this imaginative and fairy-tale series.



#Paolo Rui



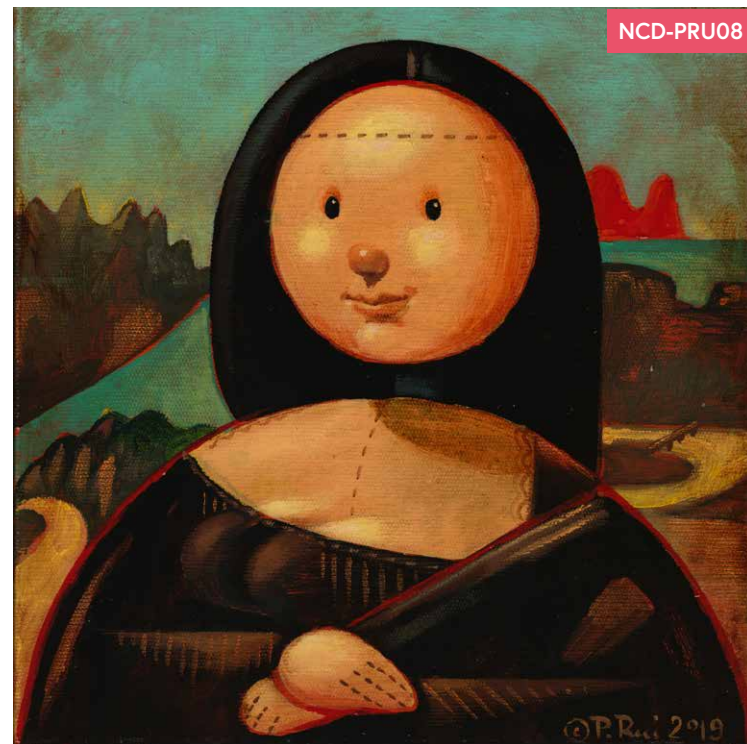
#Paolo Rui



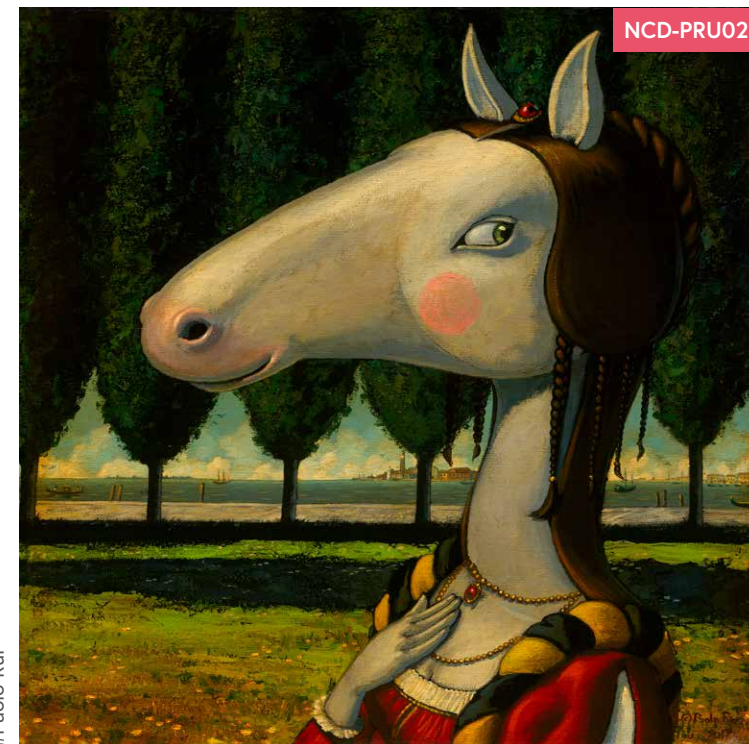
#Paolo Rui



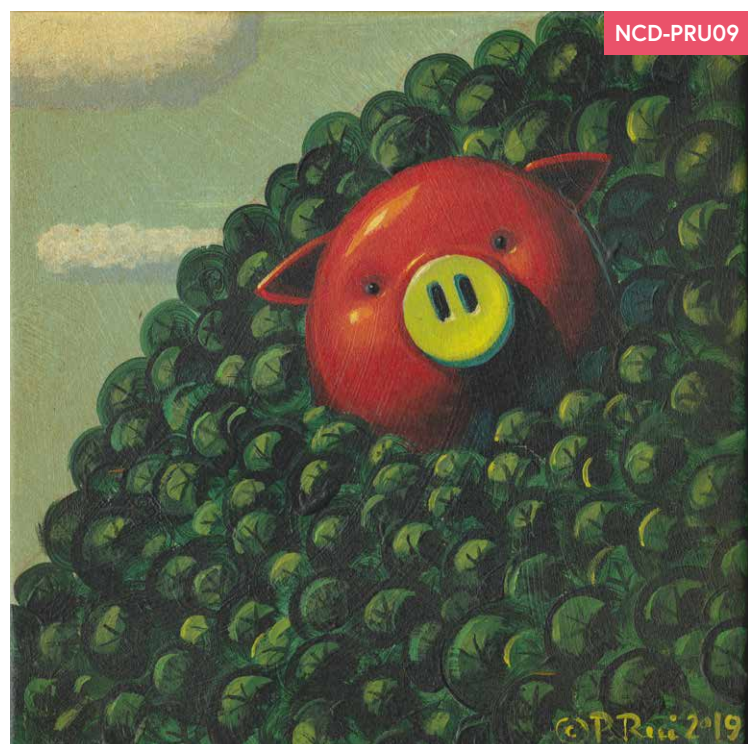
#Paolo Rui



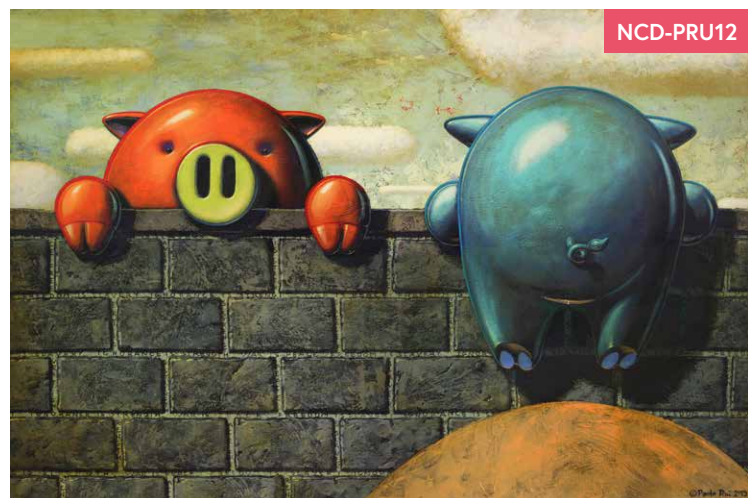
#Paolo Rui



#Paolo Rui



#Paolo Rui



#Paolo Rui

Caterina Costa©

NCD-CCT

Uno stile riconoscibile, moderno e personale accompagna tavole di fumetti che rappresentano il mondo interiore, mettendo in luce quello che accade nella nostra mente. /

A recognizable, modern and personal style accompanies comic strips that represent the inner world, highlighting what happens in our minds.



#Caterina Costa



#Caterina Costa



#Caterina Costa

Nausicaa Dalla Torre©

NCD-NDT

Illustrazioni ispirate all'arte, alla moda e alla natura. Da schizzi sciolti a disegni intricati e dettagliati con un interessante uso del colore. /

Illustrations inspired by art, fashion, and nature. From loose sketches to intricate and detailed drawings with an interesting use of colour.



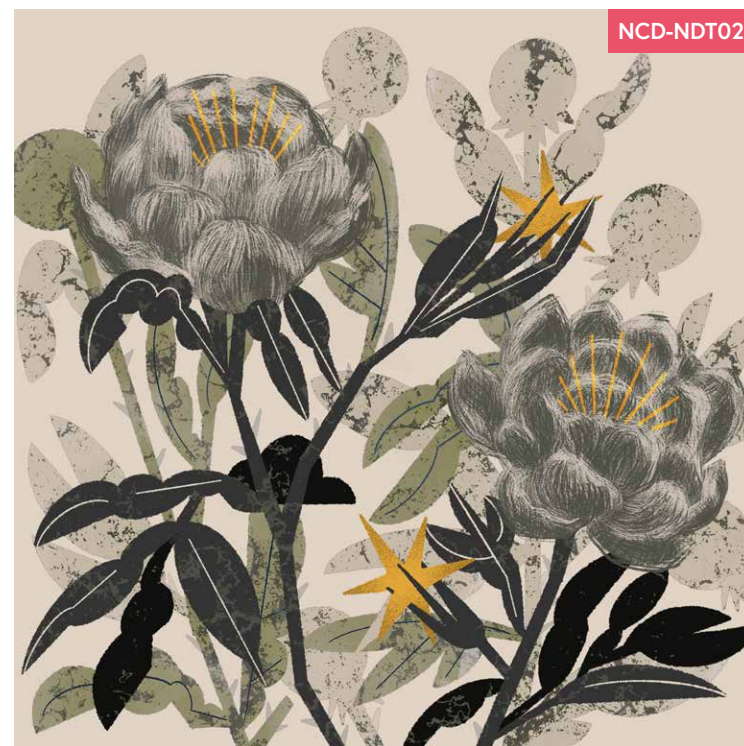
#Nausicaa Dalla Torre



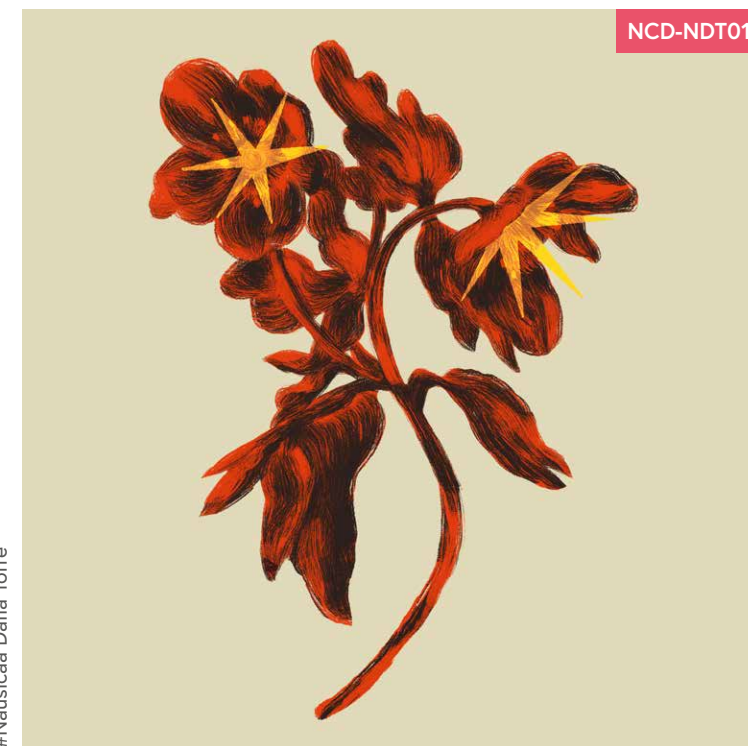
#Caterina Costa



#Caterina Costa



#Nausicaa Dalla Torre



#Nausicaa Dalla Torre

NCD-AMZ

Alessandro Manzella©

L'illustrazione non è considerata un semplice elemento decorativo, ma
descrive scorci di realtà come scene di film, drammatiche e realistiche. /

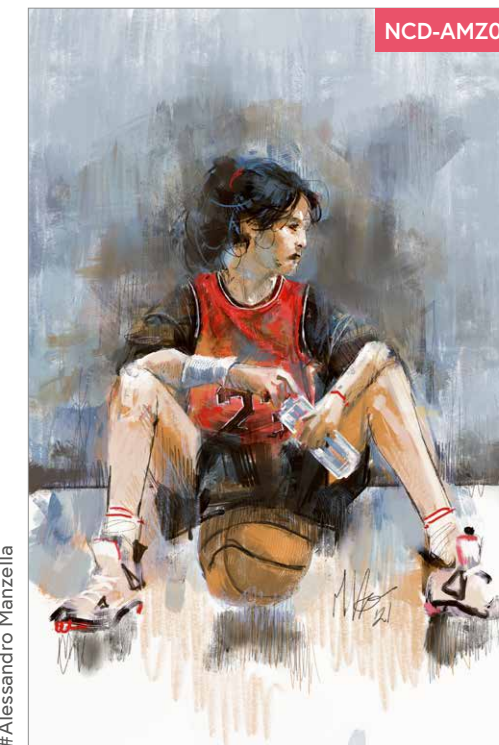
*The illustration is not considered a simple decorative element but
describes glimpses of reality such as film scenes, dramatic and realistic.*



#Nauticaa Dalla Torre



#Alessandro Manzella



#Alessandro Manzella



#Alessandro Manzella



#Alessandro Manzella



#Alessandro Manzella



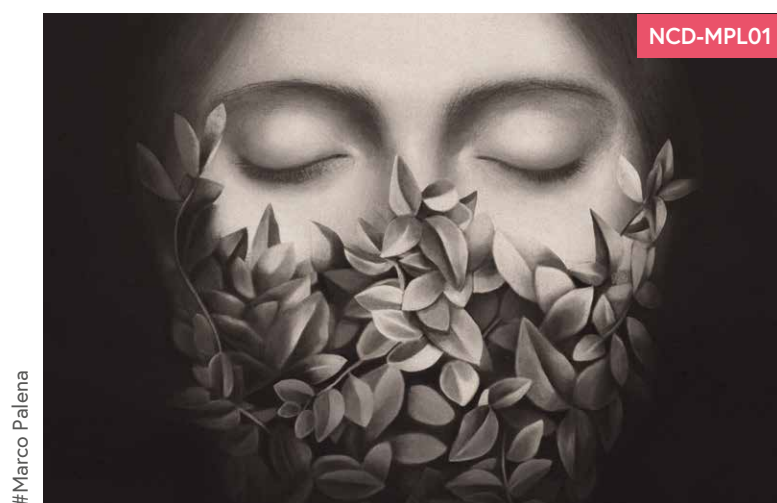
#Alessandro Manzella

NCD-MPL

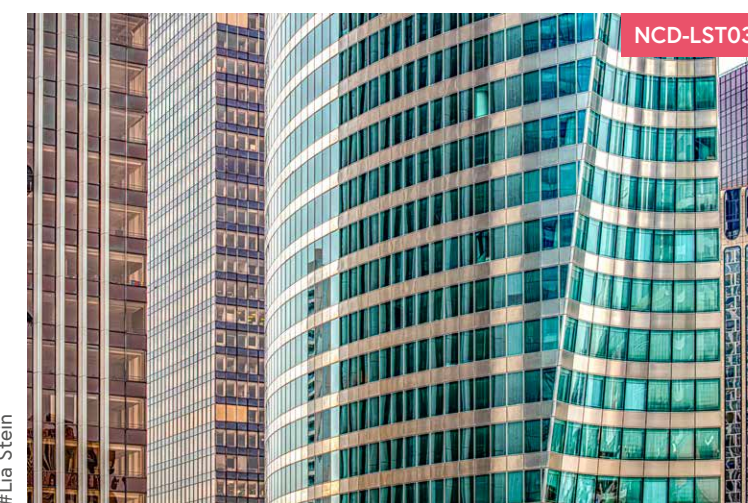
Marco Palena©

Tavole in bianco e nero che ricordano fotografie d'epoca sbiadite e nostalgiche. Il simbolismo ha una grande importanza in queste illustrazioni cariche di emozioni. /

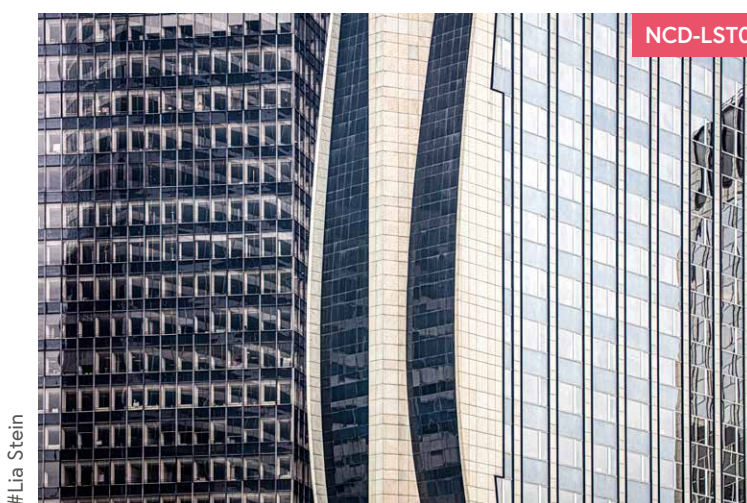
Tables in black and white that recall faded and nostalgic period photographs. Symbolism is of great importance in these emotionally charged illustrations.



#Marco Palena



#Lia Stein



#Lia Stein

NCD-LST

Lia Stein©

La fotografia è la protagonista di questa serie dedicata all'architettura delle città riprese nei dettagli e nei luoghi più simbolici. /

Photography is the protagonist of this series dedicated to the architecture of cities shot from detail to the most symbolic places.



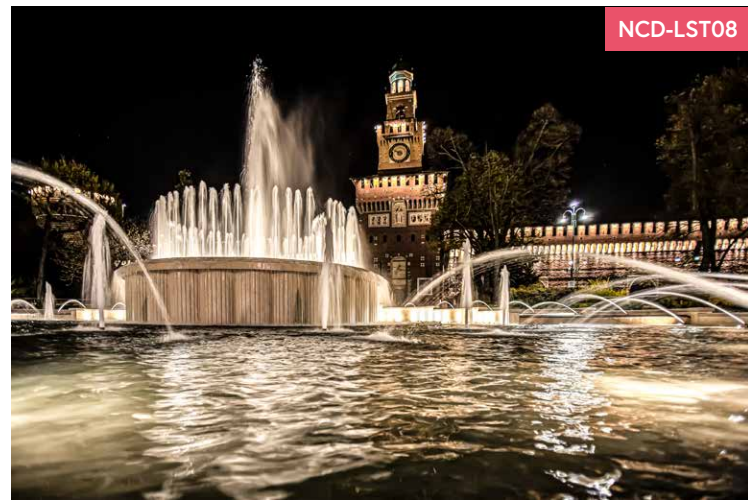
#Marco Palena



#Lia Stein

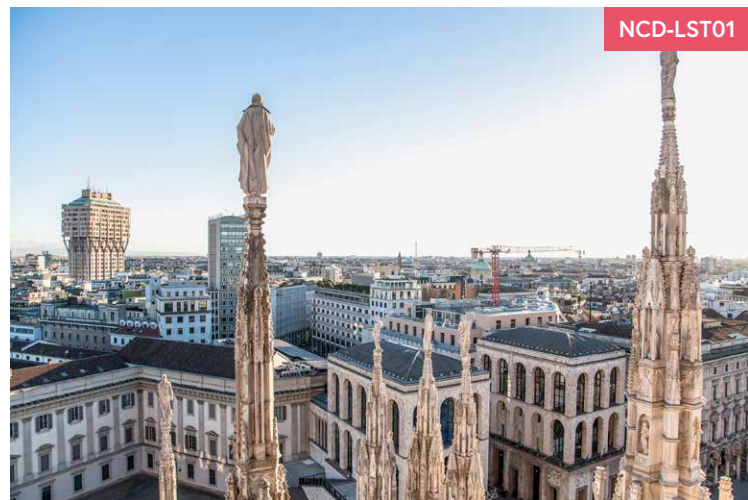


#Lia Stein



NCD-LST08

#Lia Stein



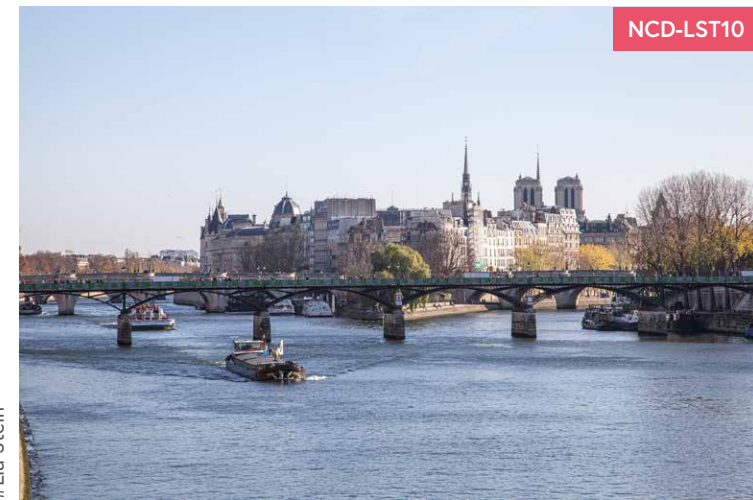
NCD-LST01

#Lia Stein



NCD-LST09

#Lia Stein



NCD-LST10

#Lia Stein



NCD-LST02

#Lia Stein



NCD-LST07

#Lia Stein

NCD-MFV

Martino Frova©

Attraverso le immagini viene rappresentata l'essenza della natura in tutti i suoi elementi: acqua, fuoco, aria, terra, vento e luce. /

The images have represented the essence of nature in all its elements: water, fire, air, earth, wind, and light.



NCD-MFV01

#Martino Frova

#Martino Frova



NCD-MFV05

#Martino Frova



NCD-MFV08

#Martino Frova



NCD-MFV03

#Martino Frova



NCD-MFV06

#Martino Frova



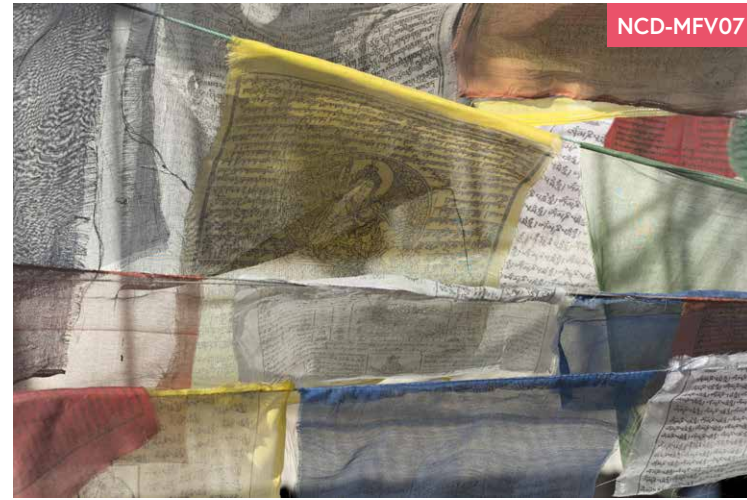
NCD-MFV04

#Martino Frova



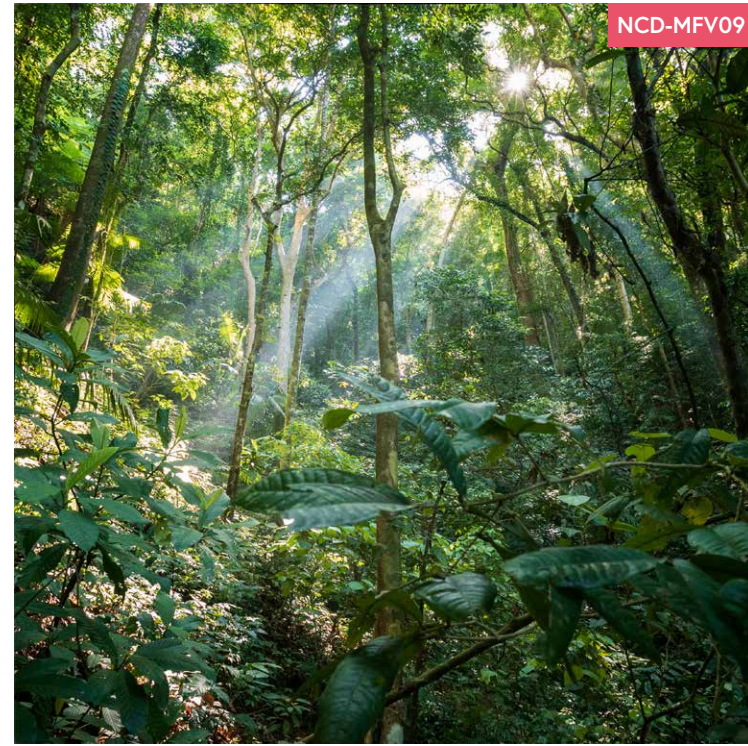
NCD-MFV02

#Martino Frova



NCD-MFV07

#Martino Frova



NCD-MFV09

NCD-SLV

Saverio Lombardi Vallauri©

Rappresentazioni fotografiche di architettura, interni, installazioni artistiche e industriali: il dettaglio e il colore costruiscono opere innovative e coinvolgenti. /

Photographic representations of architecture, interiors, artistic and industrial installations: detail and colour build innovative and engaging works.

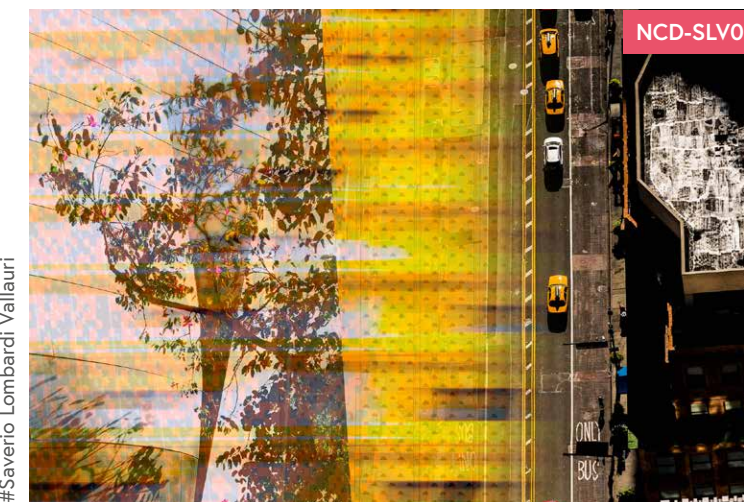
#Saverio Lombardi Vallauri



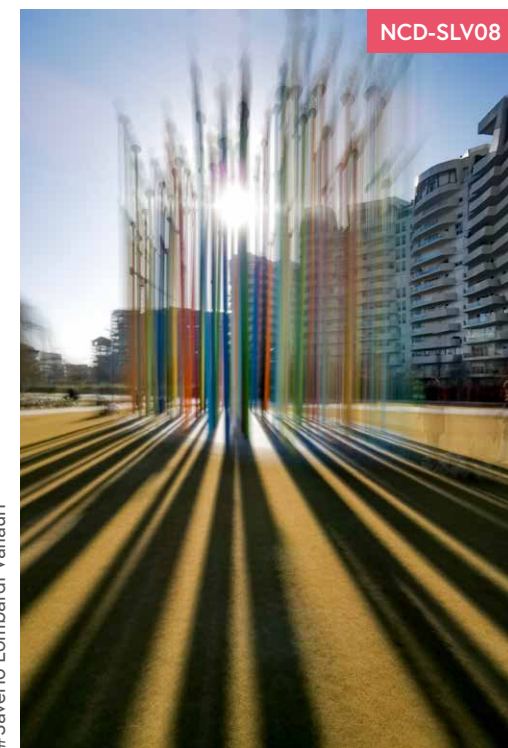
#Saverio Lombardi Vallauri



#Saverio Lombardi Vallauri



#Saverio Lombardi Vallauri



#Saverio Lombardi Vallauri



#Saverio Lombardi Vallauri



#Saverio Lombardi Vallauri



#Saverio Lombardi Vallauri



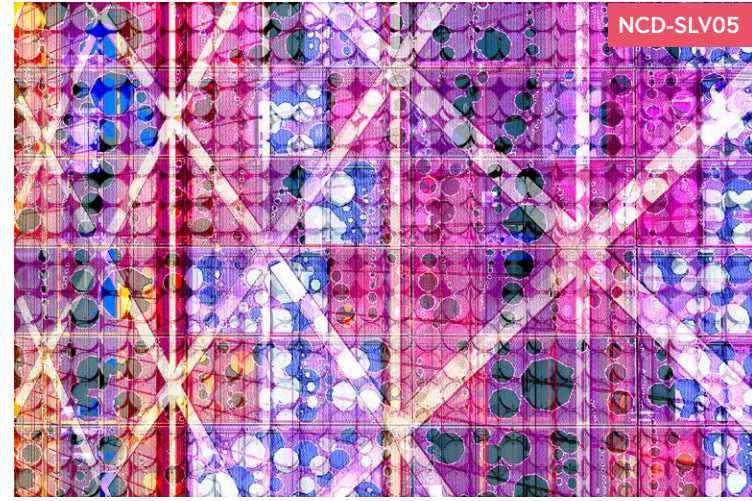
NCD-SLV09

#Saverio Lombardi Vallauri



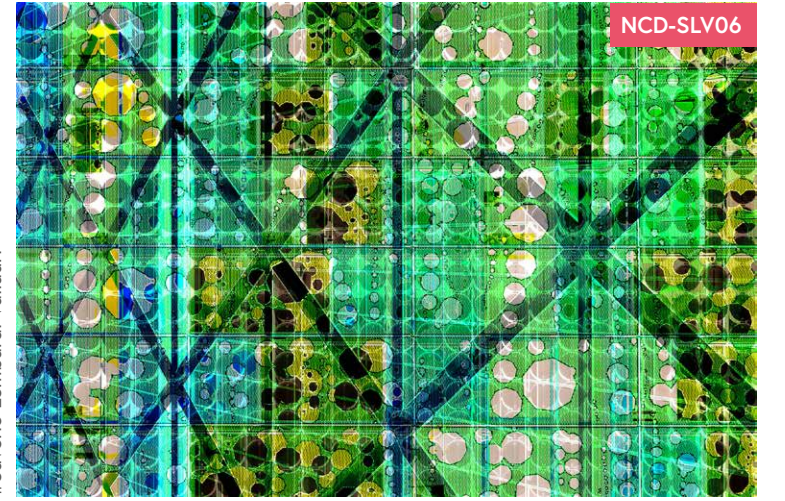
NCD-SLV10

#Saverio Lombardi Vallauri



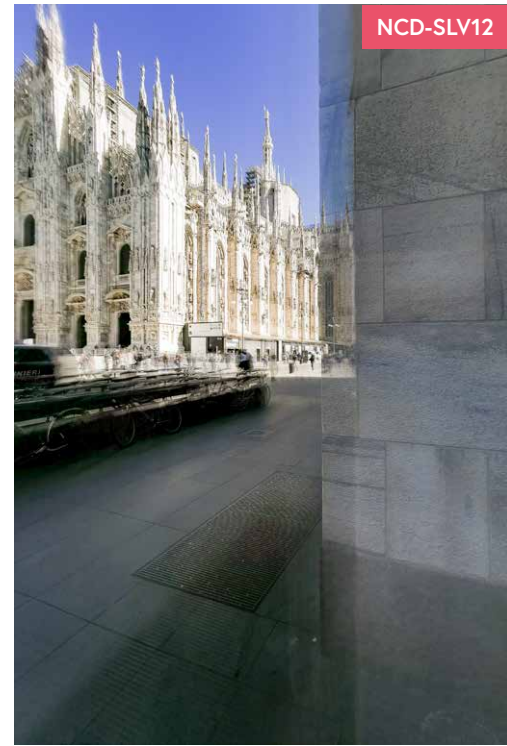
NCD-SLV05

#Saverio Lombardi Vallauri



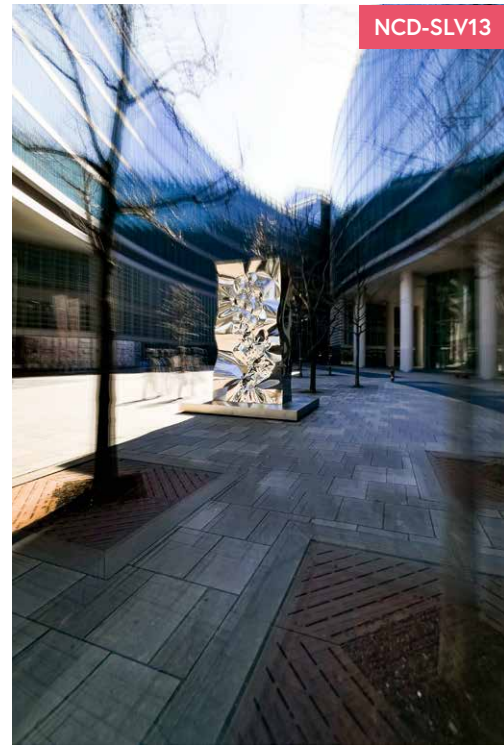
NCD-SLV06

#Saverio Lombardi Vallauri



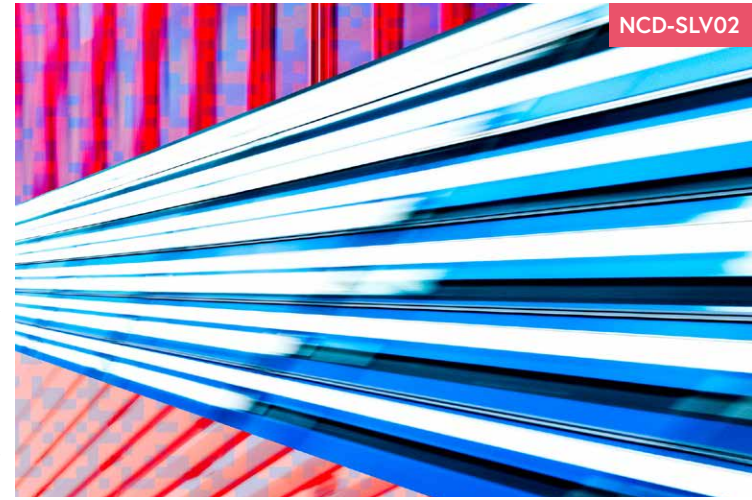
NCD-SLV12

#Saverio Lombardi Vallauri



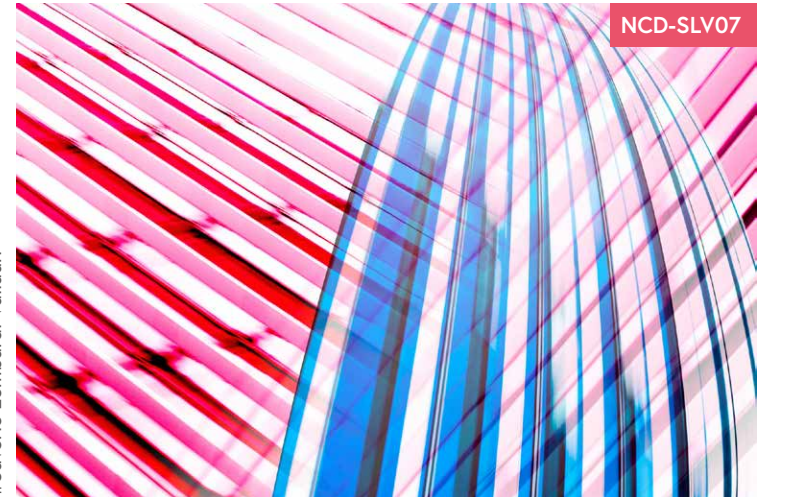
NCD-SLV13

#Saverio Lombardi Vallauri



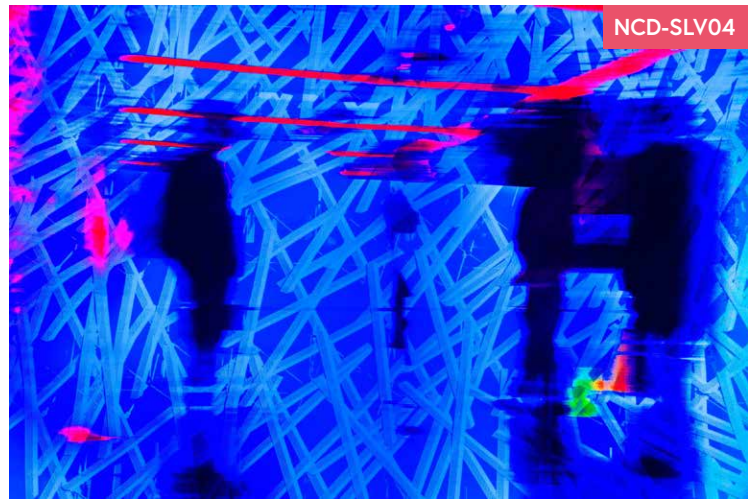
NCD-SLV02

#Saverio Lombardi Vallauri



NCD-SLV07

#Saverio Lombardi Vallauri



NCD-SLV04

#Saverio Lombardi Vallauri



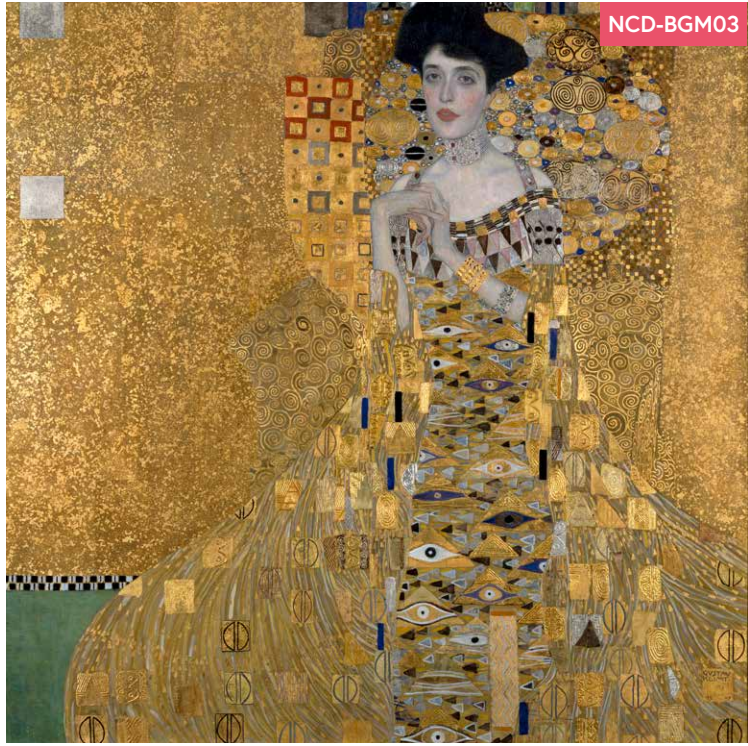
NCD-SLV01

#Archive Collection



NCD-BGM02

#Archive Collection



NCD-BGM03

Archive Collection

NCD-BGM

Dai grandi classici ad illustrazioni moderne: immagini sempre attuali che, grazie alla loro versatilità, riescono sempre a trovare il loro spazio e ad adattarsi ad ogni ambiente decorando con personalità. /

From great classics to modern illustrations: images and artworks that, thanks to their versatility, can always find their space decorating with personality.

#Archive Collection



NCD-BGM01

#Archive Collection



NCD-BGM04

#Archive Collection



NCD-BGM05

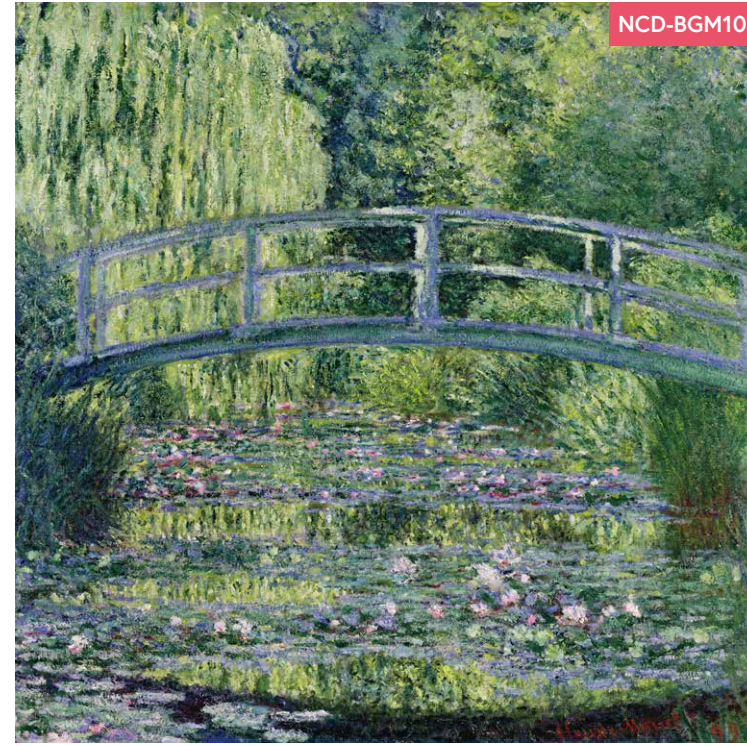
#Archive Collection



#Archive Collection



#Archive Collection



#Archive Collection



#Archive Collection



#Archive Collection



#Archive Collection



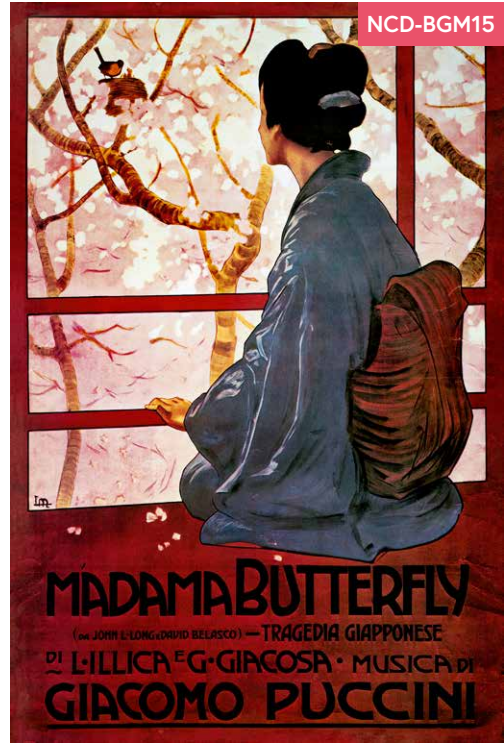
#Archive Collection





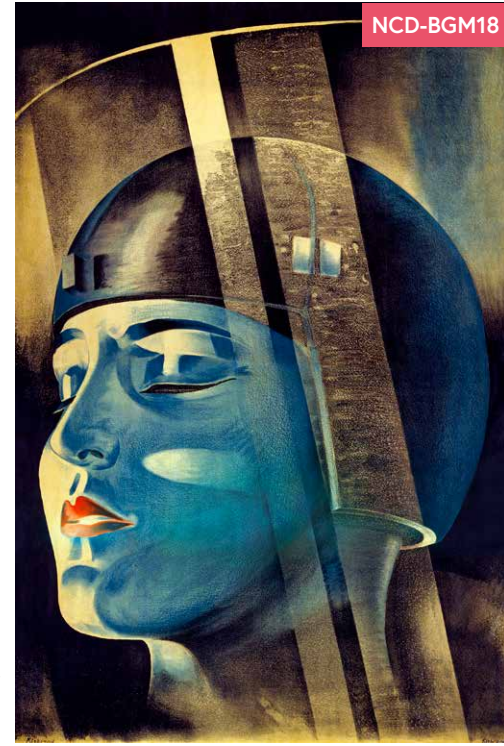
NCD-BGM14

#Archive Collection



NCD-BGM15

#Archive Collection



NCD-BGM18

#Archive Collection



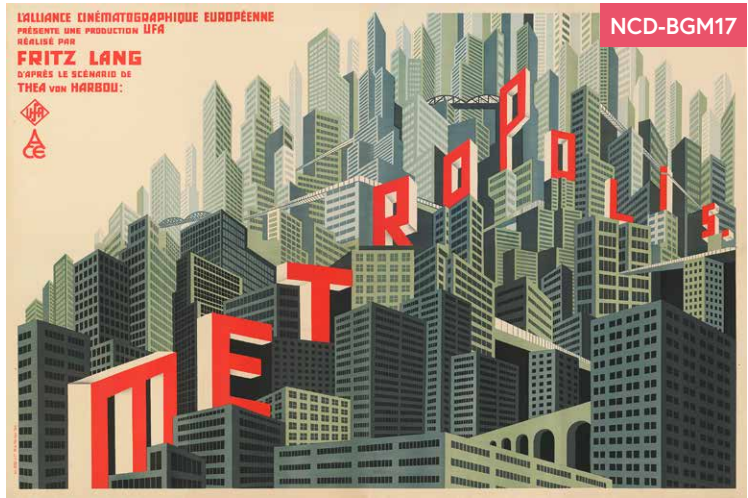
NCD-BGM19

#Archive Collection



NCD-BGM16

#Archive Collection



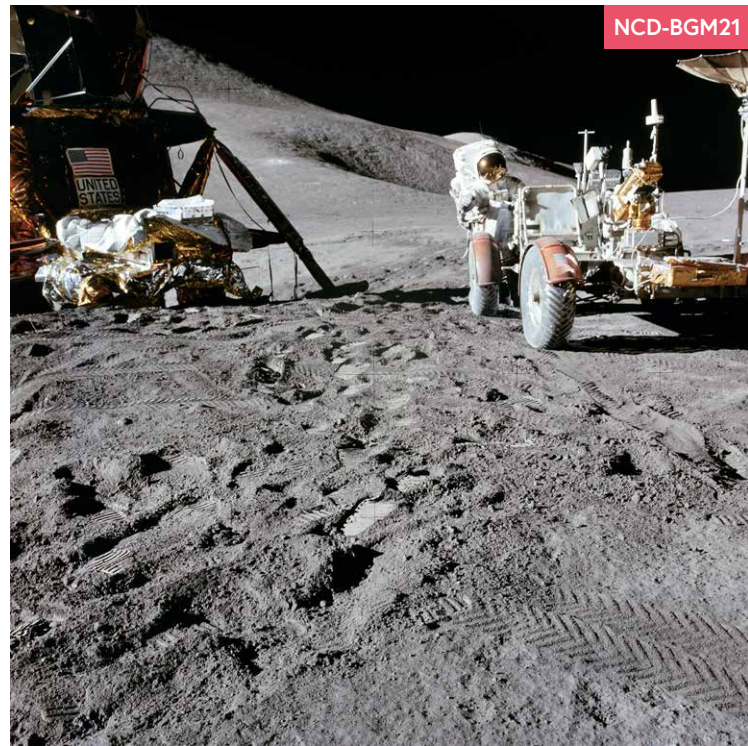
NCD-BGM17

#Archive Collection



NCD-BGM20

#Archive Collection



NCD-BGM21

#Archive Collection